

JUNE 1 - 3
SKAGEN
DENMARK

**Peter Kongerslev &
Cato Christensen**

Senior Advisor, FF Skagen
Director, SKAWInspection

**Technical Weighing Solutions for
Responsible Practices**





EUROPEAN
FISHMEAL AND FISH OIL
PRODUCERS

Conference:

Responsible Production The European Way

Responsible actions and how to verify them



**Technical weighing solutions for responsible
practices**

Peter Kongerslev,
Senior Advisor **FF Skagen**
& Scandic Pelagic

June 2, 2022

Introduction



- When it comes to reliability and credibility, the fishing industry for many years have had a very bad reputation. Politicians and other authorities have often announced new laws and steps, that should prevent the possibility for fishing and landings of unreported pelagic catches, in other words steps that should guarantee sustainable fishing and landing.
- To improve our reliability and credibility, and not least to secure sustainable landings, we by FF-Skagen in 2014 made a new policy and started to find out how to build a watertight system to make a trustworthy weighing and registration of our landings, this we did in cooperation with a local independent certified 3-rd part survey expert: “Skawinspection”.

Introduction



- However, with the local Survey company “Skawinspection”, we had the challenge that the owner of the company, also was the brother of the Fish supply Director by FF-Skagen.
- We therefore had to be even more alert in building up a reliable and trustworthy handling systems and procedures. And at the same time ensuring that the costs didn’t ran in the wild.
- In the following process, we found, that the use of R_{emote} E_{lectronic} M_{onitoring} would be a good and useful tool.
- And for the “Skawinspection” it from the beginning was made fully clear, that if their survey wasn’t reliable and trustworthy, they could not have the job.
- Therefore, all their descriptions are a part of their certifications.

Introduction



- In 2014 the way the Danish fishery control authorities handled their registration of bycatches in the industry landings was disapproved from the EU-Commission.
- In 2018 it in Brussels was decided that the “*Community control system for ensuring compliance with the rules of the common fisheries policy*” in short just called the **Control Regulation** should be renewed/improved.
- Therefore, among other a Working Group was established to make recommendations on control measurers for some pelagic fisheries. (which final report is the basic in the *EFFOP Industry standard for draining and weighing*)
- In 2018 the Danish fishery control authorities haven't yet delivered an approvable control system for the registration of bycatches in the industry landings for the EU-Commission, therefore...

Introduction



- Therefore in 2019 the Danish fishery control authorities decided that with the effect of January 2020 all future registration of bycatches should be the responsibility of the fish buyer, and a new sampling plan was put into force.
- In 2019 we by FF-Skagen and 999/MID decided that these future registrations of bycatches also should be made by an independent certified 3-part surveyor.
- Simultaneously we started to incorporate this new “regime” into all work descriptions.
- In 2022 the renewed Danish control system (finally) is approved.
- So, in the following we can say:
- **How do we do by FF-Skagen group?.....**

How do we do by FF-Skagen Group



- 1. To have an arm's length:
 - a. ...to the weighing and species control, and
 - b. ...to make sure legislations are followed, and
 - c. ...to make sure all standards are followed,

we have hired a registered, certified, independent 3-rd part Surveyor as an Inspector to handle all registrations, procedures of the weighing, the weighing itself, and the species control/determination of our landings.

How do we do by FF-Skagen Group



- 2. The company we are using is the local Danish company: “Skawinspection”.
- However, there are other survey companies e.g.:
- Sworn Inspection
- DAN EYE
- ECS EURO CARGO SERVICES
- SGS
- Intertek
- Saybolt
- NMCS NORWEGIAN MARINE & CARGO SURVEY

How do we do by FF-Skagen Group



- 3. When the Skawinspektion started doing their surveys by us, they had a good reputation as a trustworthy surveyor, but no experience with weighing and species determination of industrial landings. Therefore, they had developed specific work descriptions of the job they are doing. e.g.:



Procedure for "remote weighing" and segregation of different species, when discharging fresh unsorted pelagic bulk catches for indirect human consumption, into trailers in Hanstholm.

Table of Contents:

1. Procedure before start-up of weighing process.
2. Procedure during ongoing weighing process.
 - 2.1. Location of discharging installation.
3. Procedure for finalizing the weighing process.
4. Self-monitoring of the weighbridge.
5. Segregation of species (Determination of bycatch) of unsorted catches
6. Various enclosures

1. Procedure before start-up of weighing process

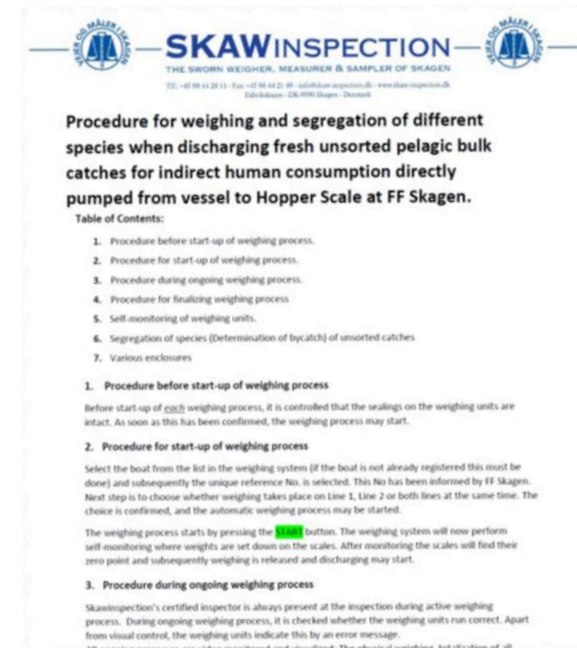
Before starting the weighing process, a visual inspection of the weighbridge itself is performed. This inspection is performed with the installed cameras and is performed to determine any conditions that could compromise the actual and accurate weighing of the weighbridge. An inspection of the weighbridges main instrument (weight indicator) is also carried out with a dedicated camera. The main instrument is connected directly to the weighbridge and must before it may be used, always indicate "0 kg.". In the same way, the "repeater" in the office where the weighbridge inspection is carried out must also show "0 kg.".

Gives the above causes of doubt, staff will be contacted "on location", this to correct the errors that may have occurred. If there is no solution to certain problem, the remote weighing procedure cannot be carried out. The person in charge at the customer and the coordinator at SKAWINSPEKTION are contacted for the further course.

If the weighbridge has not been used for a third-party inspection in the last month, the inspector must obtain the last registered check weighing to ascertain the "ability" of the weighbridge. The last valid verification or calibration certificate can on request always be obtained by contacting SKAWINSPEKTION. If there are no deviations, the equipment / weighbridge is ready for use.

2. Procedure during ongoing weighing process

Skawinspektion's inspector is during active weighing process always present in given "remote office", and the weighing itself is only carried out by Skawinspektion's certified inspectors.



How do we do by FF-Skagen Group

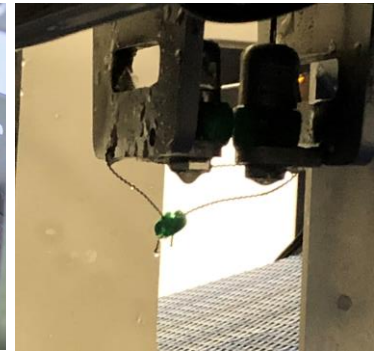


- 4. The scales we are using all are a type, that not allows any untraceable deduction in the registered volume.
- In our opinion this type of scales should be the only scales that can be named as: “an Approved scale”!
- (It took a while before our scale suppliers (Scanvægt, Jydsk Vægtfabrik and Marel) understood what type of scale we were looking for.)
- In addition, all scales are sealable.

How do we do by FF-Skagen Group



- 5. Our sealable scales are, as a part of the technical weighing solutions, of course all sealed and before start of each discharging, the inspector checks that all seals are unbroken.



- If not, the discharging cannot begin.

How do we do by FF-Skagen Group



- 6. As another part of the technical solutions, REM (monitoring cameras) are used as a tool to verify and streamline the efficiency of the Inspectors job.

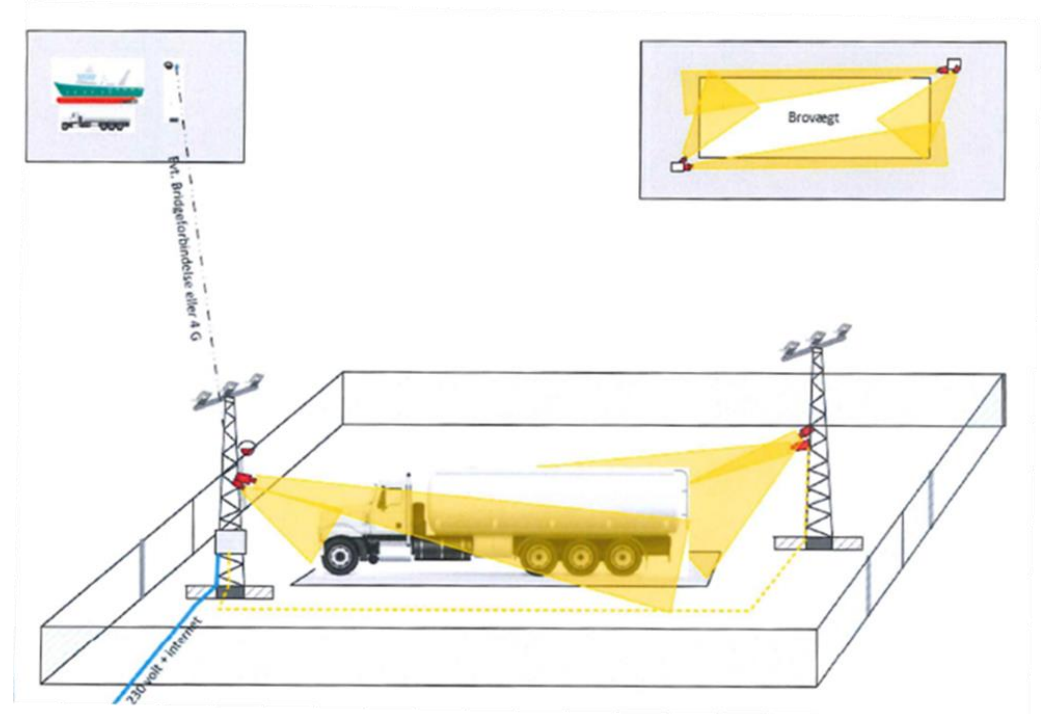
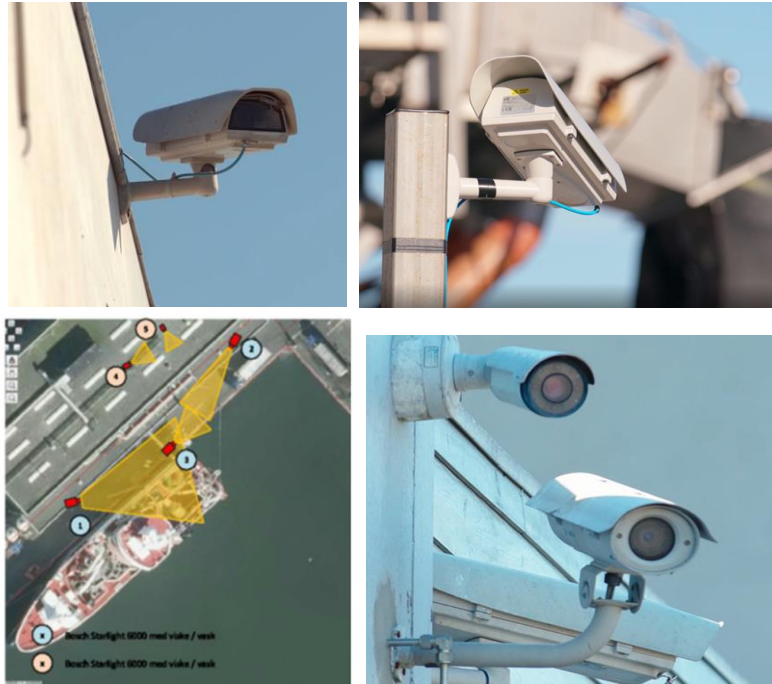
- e.g., the inspector has in his internal work description written:

....To provide any irregularities and in general to be ahead of the situation a complete set of cameras are installed on berth 43 (See below). This makes it possible to see when – and which truck drives under the discharging installation, and to see if fish is discharged into the trailer. Furthermore, it is possible to see which ship is placed at the berth, and whether it is connected to the discharging installation....

How do we do by FF-Skagen Group



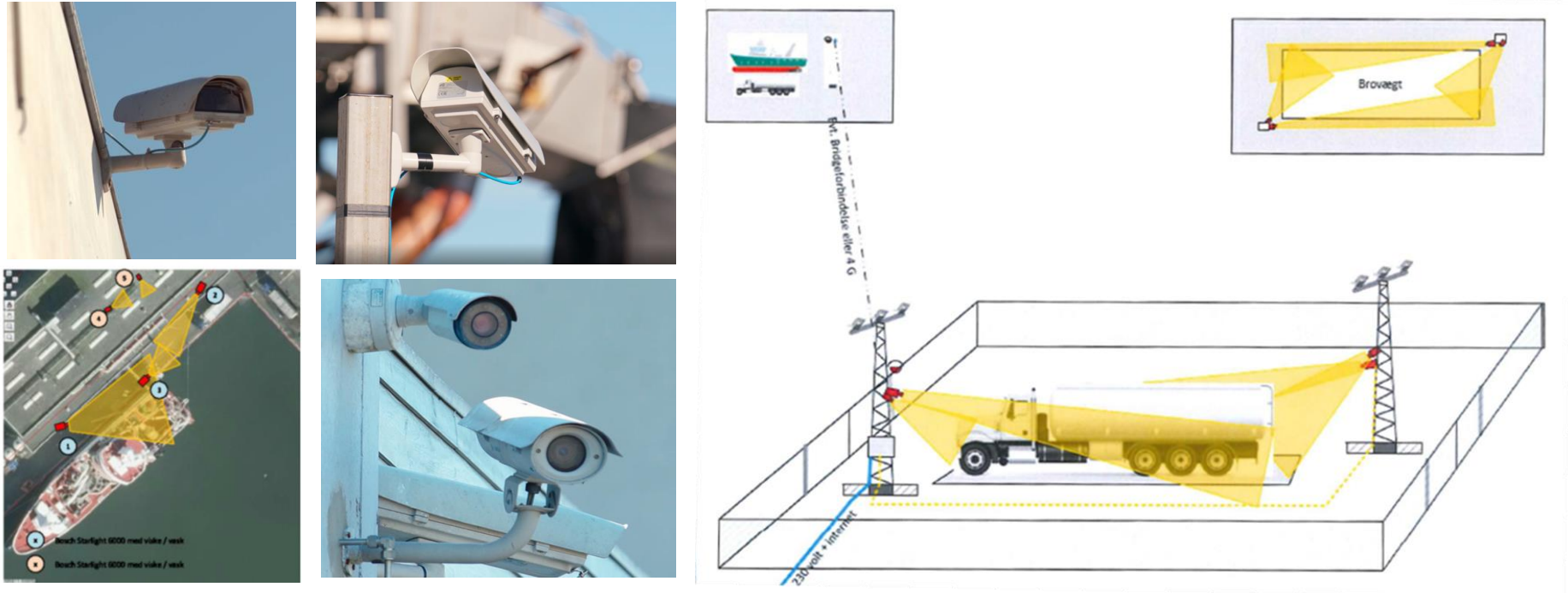
- 6. The monitoring cameras are located at strategical important places. Locations are agreed with the Danish fishery control authorities.



How do we do by FF-Skagen Group



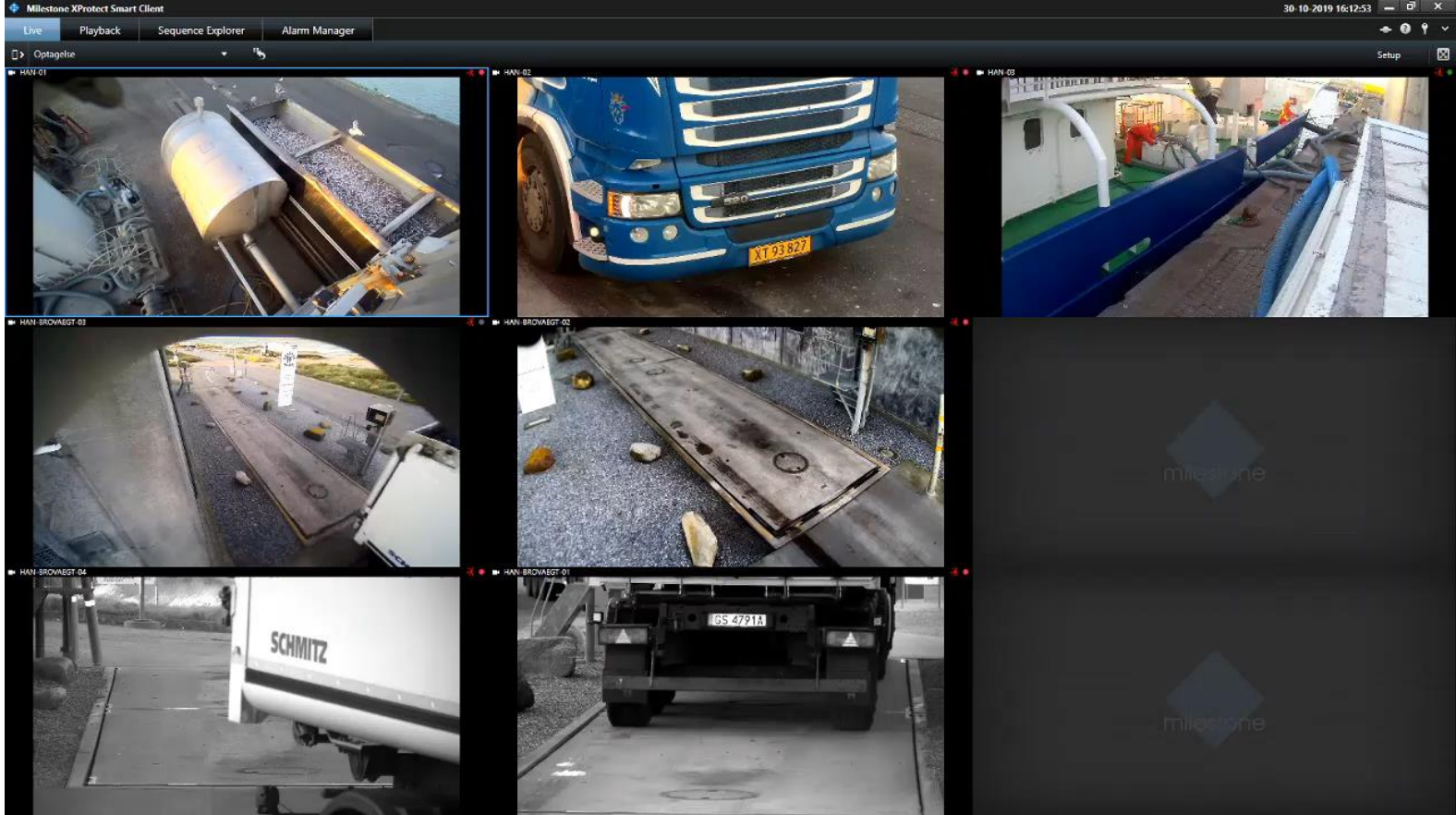
- 7. Using this REM technique at its full, also allows us to receive landings in other ports than where we are situated.



How do we do by FF-Skagen Group



➤ 7. All cameras shows live pictures, here recorded in Hanstholm...



How do we do by FF-Skagen Group



- 8. and the local fishery control office has access to all live material. [Vejestationer \(lytzenit.dk\)](http://lytzenit.dk)



How do we do by FF-Skagen Group



- 9. On top the recorded videos can be used as documentation for having done a correct job.



How do we do by FF-Skagen Group



- 10. At our daughter company Scandic Pelagic, we have implemented same/similar procedures to secure full register of the landings of Herring for Human Consumption production.



Technical weighing solutions for responsible practices

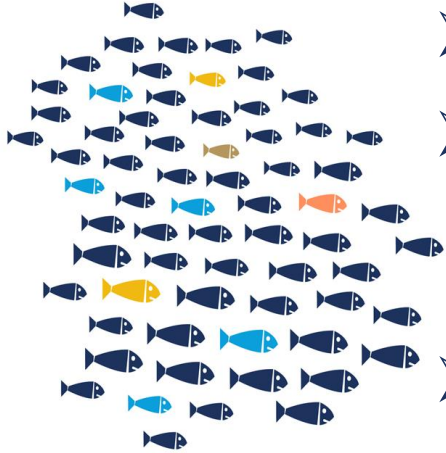


How do we do by FF-Skagen Group



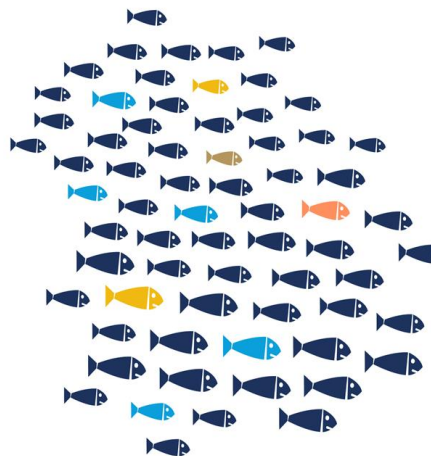
- 11. Scale technical:
- When a scale is switched on, a so called “alibi” number automatically is created.
- When the scale is stopped and started again, a new alibi number automatically is created.
- An alibi number and its recorded weighed volume, cannot be deleted, and if so, a number is missing in the line of numbers.
- In the background a total figure adds up the weighed volume, and this figure increments until one million tons, hereafter it starts up again from zero. This total “background”-volume “fits” with all alibi numbers added up.

How do we do by FF-Skagen Group



- 12. Sampling plan/samples:
- The Danish Fisheries Agency has made a mathematic sampling plans, which is based on statistical material collected over more than 10 years.
- This sampling plan is conducted by the DTU Aqua, which is the Danish National Institute of Aquatic Resources and is an institute at the Technical University of Denmark (DTU).
- This sampling plan is (at least for the time being) the most thorough sampling plan for pelagic landings ever developed. It's divided into two, one for pelagic human consumption, and one for pelagic indirect human consumption.
- Here is how it looks:

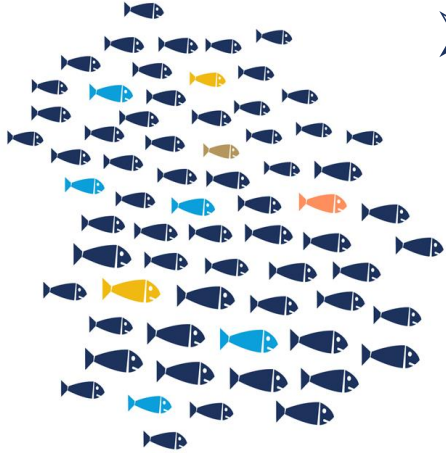
How do we do by FF-Skagen Group



➤ 12. Sampling plan/samples:: indirect human consumption.

Species	Waters/ Sea	Number of 10 Kg. samples at landings of 25 tonnes or less	Number of 10 Kg. samples at landings between 25-200 tons	Number of 10 Kg. samples for landings over 200 tonnes
Sandeel (SAN)	North Sea/ Skagerrak/Katt egat	3	3 plus 1 pr. commenced 50 tons	6 plus 1 pr commenced 250 tons
Sprat (SPR)	3A	5	5 plus 1 pr. commenced 25 tons, max 10 though	21
Sprat (SPR)	North Sea	5	5 plus 1 pr. commenced 25 tons, max 10 though	24
Sprat (SPR)	3D	5	5 plus 1 pr. commenced 25 tons, max 10 though	15
Herring (HER)	3D	5	5 plus 1 pr. commenced 25 tons, max 10 though	15
Norway Pout (NOP)	All	5	5 plus 1 pr. commenced 25 tons, max 10 though	24
Blue whiting (BLH)	All	3	4	4 plus 1 pr commenced 250 tons
Boarfish (BOR)	All	3	3 plus 1 pr. commenced 50 tons	6 plus 1 pr commenced 250 tons
Other Species*	All	0,5 Permille of the catch, minimum 100kg though	0,5 Permille of the catch	0,5 Permille of the catch

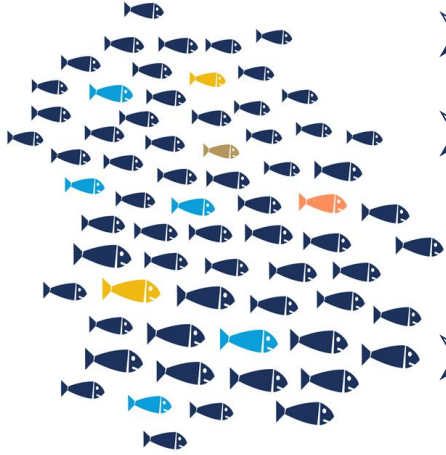
How do we do by FF-Skagen Group



➤ 12. Sampling plan/samples: human consumption.

Volume expected landed (tons)	Minimum total weight of random samples (kg)
Under 5	8
5 to 15 excl.	20
15 to 40 excl.	40
40 to 60 excl.	60
60 to 80 excl.	80
80 to 100 excl.	100
100 tons and over	120 kg however at least minimum 0,08 % of every quantity higher than 100 tons.

How do we do by FF-Skagen Group



- 12. Sampling plan/samples:
- The Danish Fisheries Authorities Agency sampling plans requires also that it is obliged that:
 - A:.....All the sample collections taken must be representative, this means:
 - B:.....That you must secure, that all samples taken out is properly taken out e.g., from the full withs of a conveyor belt.
 - C:.....The sample collection must be approved by the Danish Fisheries Authorities Agency.

How do we do by FF-Skagen Group



- 13. Costs:
- Investment: Cameras: Our camera and software supplier (Lytzen) informed in 2021 that price for e.g., 3 heated cameras and all the required software (Milestone) all in all costs around € 6.000,-
- Investment: Scales: very difficult to say. Is depended on the needed capacity but expect from 100-200.000 €.
- Surveyor: Costs average over the past years at FF for the weighing: € 0,80, and for the species control € 2,00 /ton raw material.
- Costs average over the past years at Scandic Pelagic for the weighing and for the species control combined: € 2,95 /ton raw material

How do we do by FF-Skagen Group



- 13. Costs: Who must pay these costs?
- Surveys: FF Skagen pays for weighing of the industrial fish, and the fishermen are billed for the species determination.
- Surveys: Scandic Pelagic (human consumption) the fishermen are billed all Survey costs, that is the costs for the weighing as well as for the species determination.
- Equipment: FF-Group has all costs.
- What next.....?

How do we do by FF-Skagen Group



➤ **14. Can we afford not to be a part of the securing sustainable fishing. We think not.**

- When we started securing full registration by us, not all fishermen were happy.
- Now the DPPO (Danish Pelagic Producer Organization) besides their codex in addition has announced, that they by the end of 2022 will have installed CCTV (Closed Circuit Tele Vision) and associated sensors on all Danish pelagic vessels organized in the DPPO. And all data and information from the fishing operations are made directly available to the Danish fisheries authorities.
- Web: [The danish pelagic fishing fleet in DPPO's membership introduces 100% documented fisheries – DPPO](#)

How do we do by FF-Skagen Group



- **14. Can we afford not to be a part of the securing sustainable fishing. We think not.**
- EFFOP back in Faroe Island 3 years ago decided to develop the “***EFFOP’S Industry standard***”. So far so good.
- However, in our point of view a natural next step, must be a ***version 2.0*** of this standard, including all the thorough descriptions, sampling plans, REM and Scale requirements described in this presentation.
- On top this coming version 2.0 as a new Standard should include pelagic landings for human consumption.
- A general standard for all Pelagic's like that, will be welcomed.

How do we do by FF-Skagen Group



➤ **14. Can we afford not to be a part of the securing sustainable fishing. We think not.**



➤ But why a version 2.0 ?

➤ Because as written in the beginning of the version 1.0:

➤ **Credibility, traceability, accountability and sustainability are central to the fish processing industries.**

➤ In other words:

➤ **Our future depends on decisions made today.**

How do we do by FF-Skagen Group



➤ Questions.....?

How do we do by FF-Skagen Group



When I was a boy, my momma would send me
down to the corner store with \$1.00.
And I'd come back with:
5 potatoes, 2 loaves of bread,
3 bottles of milk, a hunk of cheese,
a box of tea and 6 eggs.
You can't do that now...
...too many fuckin' security cameras.

How do we do by FF-Skagen Group



➤ Thank you for your time !

How do we do by FF-Skagen Group



Best regards
Peter Kongerslev
Senior Advisor
peko@scandicpelagic.com



- WE CREATE VALUE OF MARINE RESOURCES



How do we do by FF-Skagen Group



How do we do by FF-Skagen Group



- [Sådan sikrer vi gennemsigtighed og lige vilkår – Marine Ingredients Denmark \(maring.org\)](http://maring.org)

Third party surveillance – transparency builds confidence

Are you- and your company ready to
commit yourselves to new demands?

Name: Cato B. Christensen
Title: Owner/CEO
Profession: Cargo Surveyor



IMPLICATIONS of Third Party surveillance

- What is a third party?
- Benefits from transparency: Credibility, trust, no disagreements
- Your obligations: Think differently, accept standardized procedures

FAO (UN) also secures transparency by the service of a third party



The fishing industry to a great extent is using third-party monitoring

Certification and independency **DOCUMENTET!**

- Strong company governance and finances (ISO/IEC 17020)
- Guidelines for observing personal relationships (ISO 37001)



Third-party surveillance

"THE SKAGEN WAY"



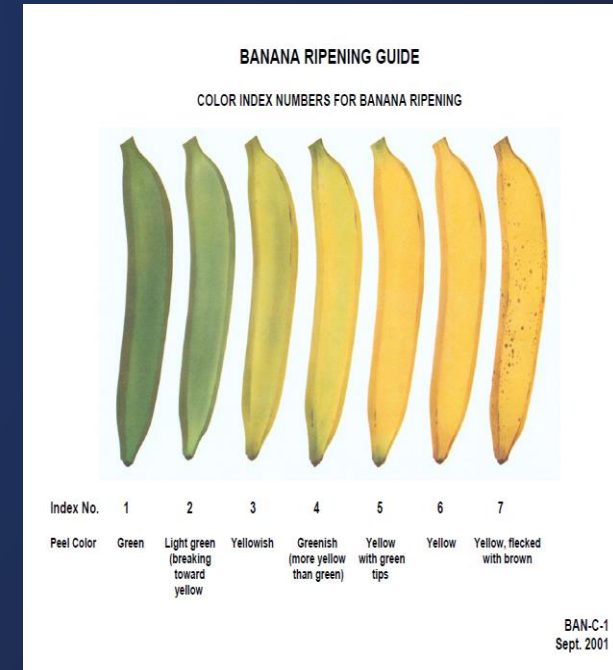
All pelagic landings are monitored down to the smallest detail
All quantities landed are weighed on approved calibrated scales
Species are sorted according to national regulations
All results are shared with involved parties including authorities
Data from Danish vessels are shared with scientists

Danish actors FF Skagen and Triple Nine are creating
transparency – not just talking about it

That makes me proud as an independent surveyor and as a
citizen

As an additional guarantee of impartiality, inspections are carried out in all kind of industries

- Inspection of fresh fruit
- Draft surveys in ships
- Bunker surveys, heavy fuel, diesel
- Sampling of grains and feeds
- Cleaning inspections





SKAWINSPECTION

INSPECTION
BUNKER SURVEY
TALLY
DRAFT SURVEY
WEIGHING
MEASUREMENT



We make your trades transparent and credible avoiding disagreements

Contact 24 Hours: +45 98 44 28 11

Make us glad, and take a brochure...

Inside the brochure you will find the following:

- A copy of Accredited Inspection Report
- Description of working procedure with digital cameras. Surveillance



> Weighing and measuring > Sampling > Tally > Inspection and check > Draft and bunker survey > Other services

