

JUNE 1 - 3  
SKAGEN  
DENMARK

Anne  
Mette  
Bæk

Director of EFFOP &  
Marine Ingredients Denmark

Fisheries Control Systems – the  
Danish Way



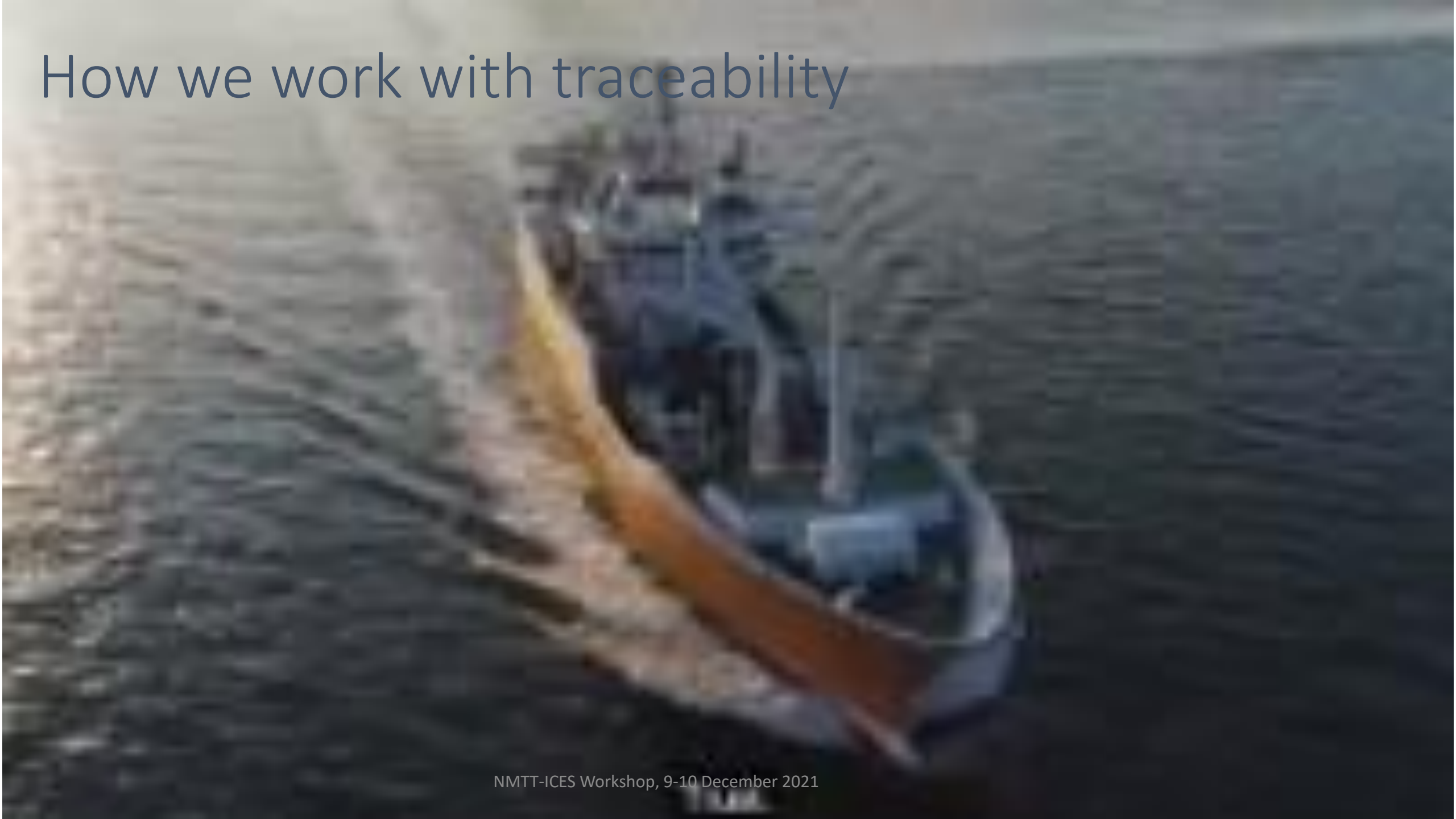
The background of the slide is a photograph of an industrial facility, likely a refinery or chemical plant. It features large, dark-colored pipes and tanks, some of which are painted blue. The scene is set against a clear blue sky. A large white circle is superimposed over the center of the image, containing the main text.

# Responsible sourcing in the marine ingredients industry

**EFFOP**  
**Members conference**

Anne Mette Bæk  
Skagen June 1<sup>st</sup> 2022

# How we work with traceability



# Industry Standard for draining, weighing and sampling of unsorted pelagic landings

Agreed by EFFOP  
Members in 2020





The need for and purpose of the standard

Create a level playing field

Remove irregularities in weighing,  
sorting and sampling

Promote traceability and increase  
transparency

Increase trust with key stakeholders

Prove legality

Verify sustainability

Ensure correct handling of quotas

Increase effectiveness of reporting





# The need for and purpose of the standard

The standard is **supplement** to the current national legislations and international agreements and has been developed on the basis of the FAO Code of Conduct for Responsible Fisheries and the post-harvest practices for responsible fish utilization stated herein.

- Landings to the first-time buyer or processor of the fish shall take place in **approved ports** with access to **approved landing and weighing facilities** as well as an **approved operator responsible for the weighing documentation** of the catch
- Water is drained from the fish via **harmonized systems**
- For all unsorted pelagic landings, for fishmeal and oil, all weighing, sampling of species and documentation of the landed catch and bycatch must be made **based on a pre-defined sampling plan** following national rules and regulations

Thank you



EUROPEAN  
FISHMEAL AND FISH OIL  
PRODUCERS