

# UN Agenda 2030 and the SDGs

Katherine Richardson, Professor

Leader, Sustainability Science Centre  
Member, IGS authors of 2019 GSDR

KØBENHAVNS UNIVERSITET







## Climate/Sustainability Challenge:

**To bring and maintain the human demand for Earth resources to within their supply!**

**Sustainable development is a "need to have" not a "nice to have" ....**



# SDGs are a vision for how we want to share the Earth's resources!



Relevant for all global citizens – not just for those in developing countries







September 11, 2019



**Few goals are on track  
to be met... and for  
several critical goals, the  
trends are in the wrong  
direction!**

KØBENHAVNS UNIVERSITET

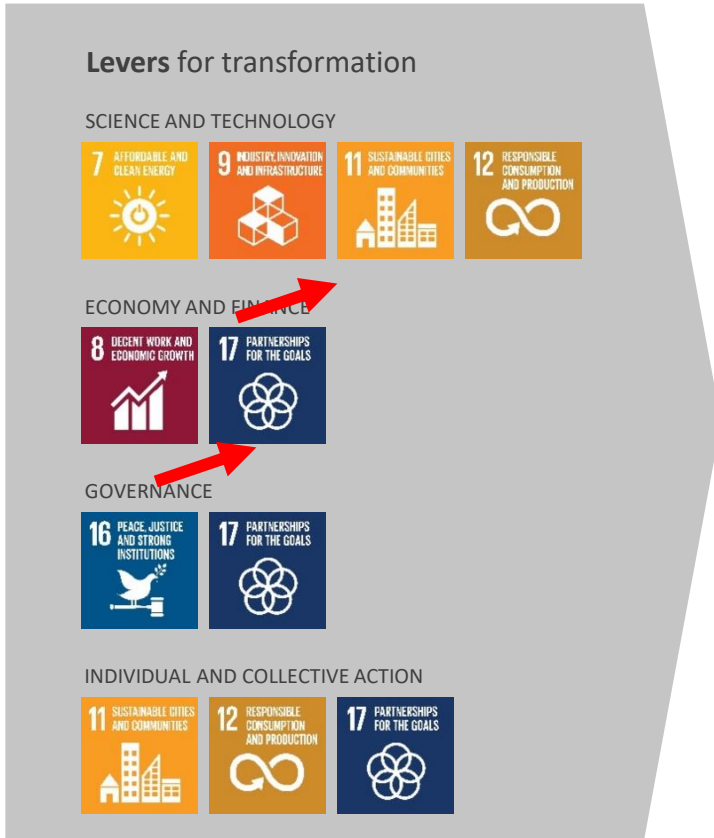


Business-as-usual approaches

GOAL	WITHIN 5%	5-10%	>10%	NEGATIVE LONG-TERM TREND
Goal 1		1.1. Eradicating extreme poverty	1.3. Social protection for all	
Goal 2		2.1. Ending hunger (undernourishment)	2.2. Ending malnutrition (stunting) 2.5. Maintaining genetic diversity 2.a. Investment in agriculture*	2.2. Ending malnutrition (overweight)
Goal 3	3.2. Under 5 mortality 3.2. Neonatal mortality		3.1. Maternal mortality 3.4. Premature deaths from non-communicable diseases	
Goal 4	4.1 Enrolment in primary education	4.6 Literacy among youth and adults	4.2. Early childhood development 4.1 Enrolment in secondary education 4.3 Enrolment in tertiary education	
Goal 5			5.5. Women political participation	
Goal 6		6.2. Access to safe sanitation (open defecation practices)	6.1. Access to safely managed drinking water 6.2. Access to safely managed sanitation service	
Goal 7		7.1. Access to electricity	7.2. Share of renewable energy* 7.3. Energy intensity	
Goal 8			8.7. Use of child labour	
Goal 9		9.5. Enhancing scientific research (R&D expenditure)	9.5. Enhancing scientific research (number of researchers)	
Goal 10			10.c. Remittance costs	Inequality in income**
Goal 11			11.1. Urban population living in slums*	
Goal 12				12.2. Absolute material footprint, and DMC*
Goal 13				Global GHG emissions relative to Paris targets**
Goal 14				14.1. Continued deterioration of coastal waters* 14.4. Overfishing*
Goal 15				15.5. Biodiversity loss* 15.7. Wildlife poaching and trafficking
Goal 16			16.9 universal birth registration *	

\* target not specified \*\* based on most recently available data

# Interactions between the SDGs



## Goals relating to global environmental



## Goals improving human wellbeing



## Linking goal



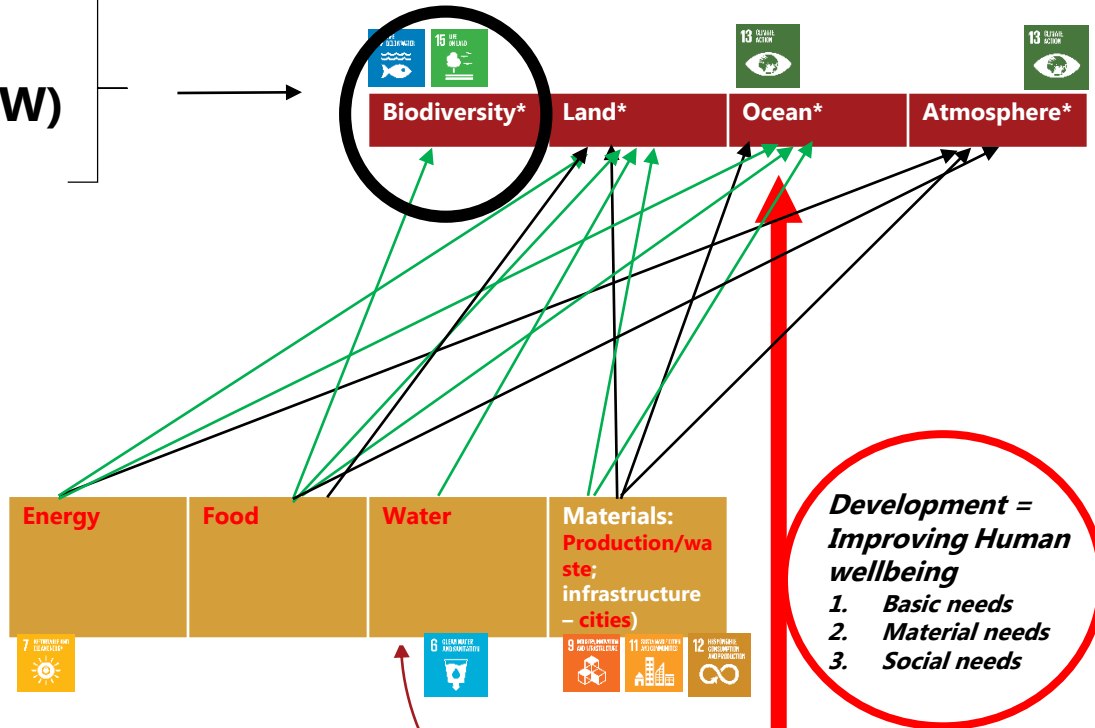
**But we do not “think” in terms of SDGs!**



The challenge of SD is giving all access to the finite resources necessary to allow continued development. This requires  and .

Land  
Ocean (FW)

### Earth Resources



→ waste

→ Direct use or habitat change



"Human potential realization"

# *Differences between terrestrial and marine ecosystems:*



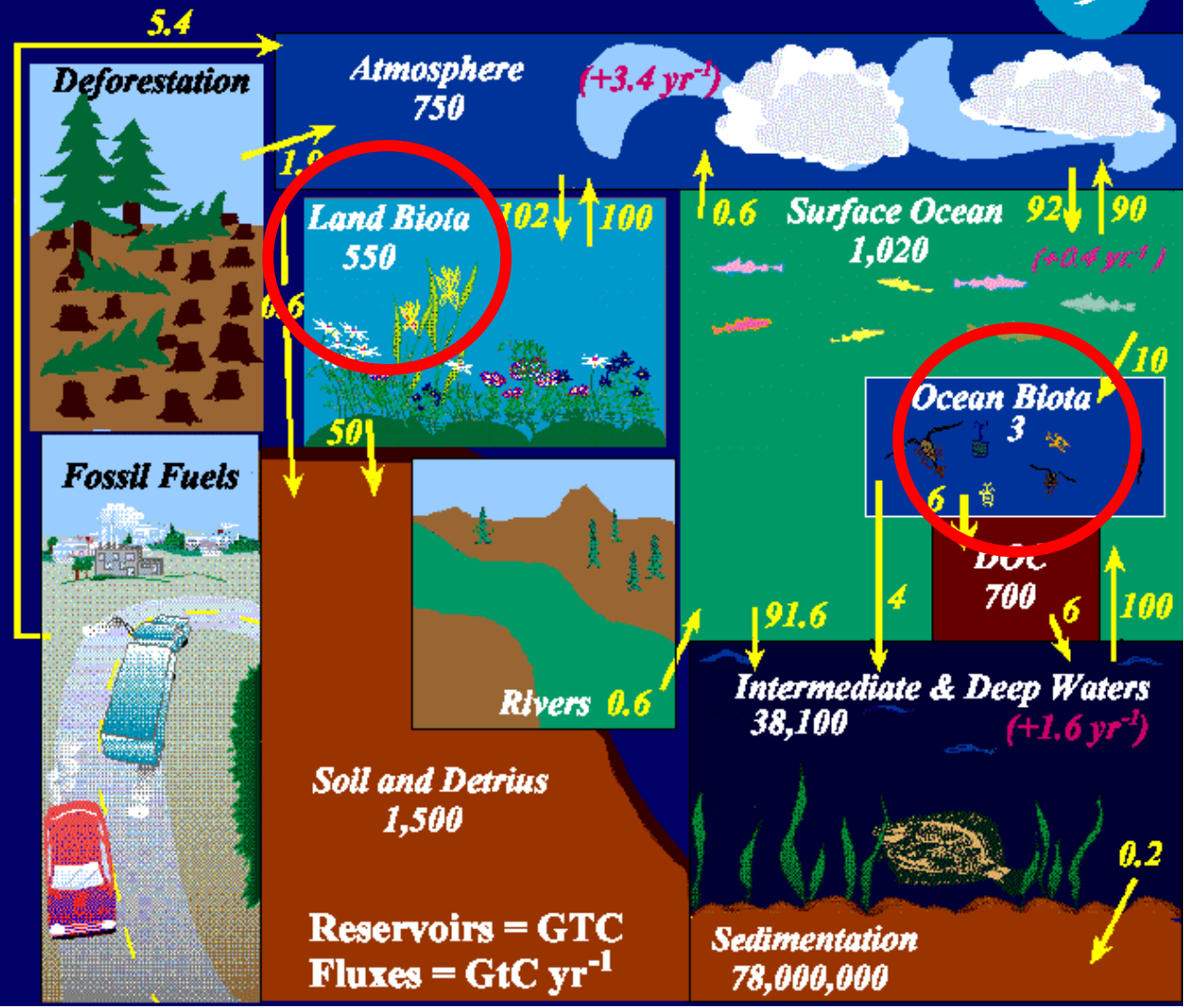
**What structures ecosystems?**

Access to water

vs.

predation

# Global Carbon Cycle 1980-1989



*Structure* of ecosystems controls ocean biosphere interactions in the Earth System, i.e. climate.

## Frå pestilens til protein: Nu bliver søstjerner lavet til grise foder

Der er søstjerner på menuen hos svineproducent Knud Anker Munch. Foderet kommer fra en ny søstjernefabrik i Salling, som både landmæn



MIDT- OG VESTJYLLAND

## Fiskere tripper for at fange søstjerner: Udnytter havbundens plage til dyrefoder

Søstjerner har i mange år været en plage. Nu står et nyt industrieventyr på spring.

## Ny fabrik forvandler søstjerner til grise foder

29-03-2019

GUDP

Støtte fra det grønne demonstrations- og udviklingsprogram GUDP har banet vejen for verdens første søstjernefabrik, som indvies af finansminister Kristian Jensen fredag den 29. marts. Fabrikken forvandler en irriterende plage for fiskerne til et godt proteinfoder til økologiske svin.

**Starfish did not evolve simply to irritate Danish fishermen!**

# Emergence of a global science–business initiative for ocean stewardship

Henrik Österblom<sup>a,1,2</sup>, Jean-Baptiste Jouffray<sup>a,b,1</sup>, Carl Folke<sup>a,b,c</sup>, and Johan Rockström<sup>a</sup>

<sup>a</sup>Stockholm Resilience Centre, Stockholm University, 106 91 Stockholm, Sweden; <sup>b</sup>Global Economic Dynamics and the Biosphere Academy Programme, Royal Swedish Academy of Sciences, 104 05 Stockholm, Sweden; and <sup>c</sup>Beijer Institute of Ecological Economics, Royal Swedish Academy of Sciences, 104 05 Stockholm, Sweden

Edited by Bonnie J. McCay, Rutgers, The State University of New Jersey, New Brunswick, NJ, and approved July 14, 2017 (received for review March 16, 2017)





All activities have both **positive** and **negative** interactions with SDGs!



From “sector” to “system”  
thinking!!



Sustainable development is all about finding the “sweet spot” where synergies are exploited while negative impacts are minimized!

