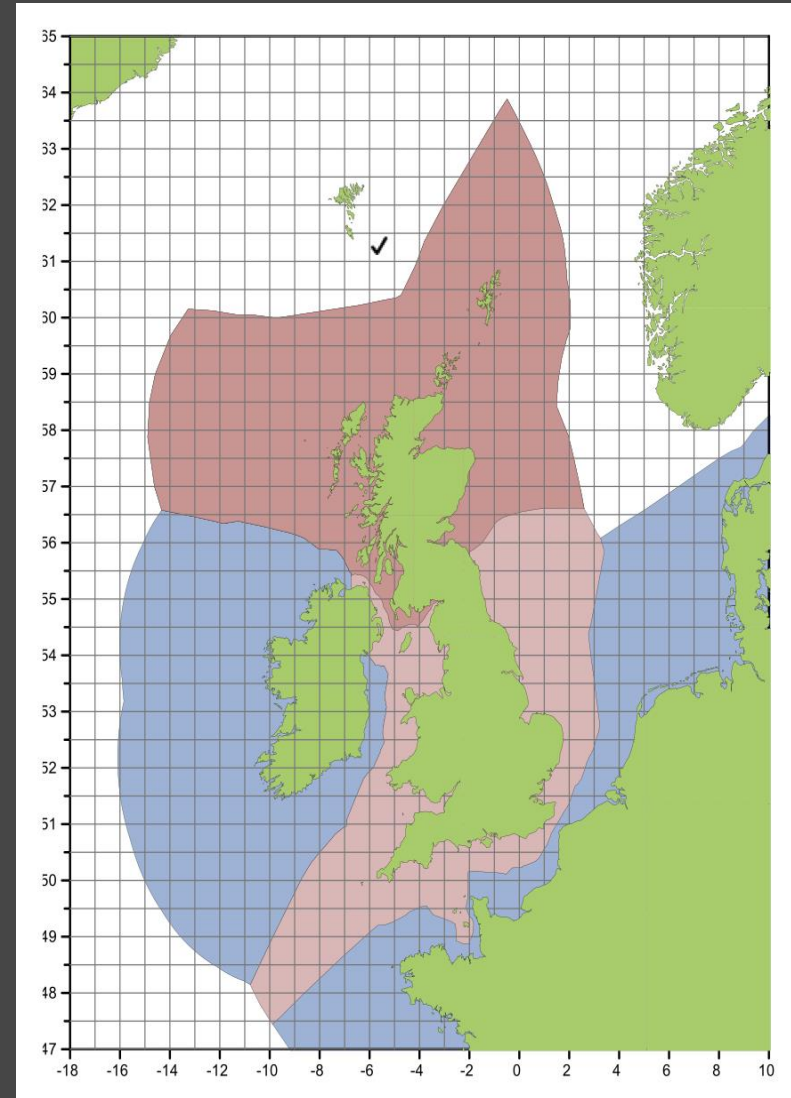


# EU FISHMEAL CONFERENCE

DUBLIN /  
KILLYBEGS  
13-15 SEP 2017

IFPEA  
PRESENTATION



Lorcán Ó Cinnéide

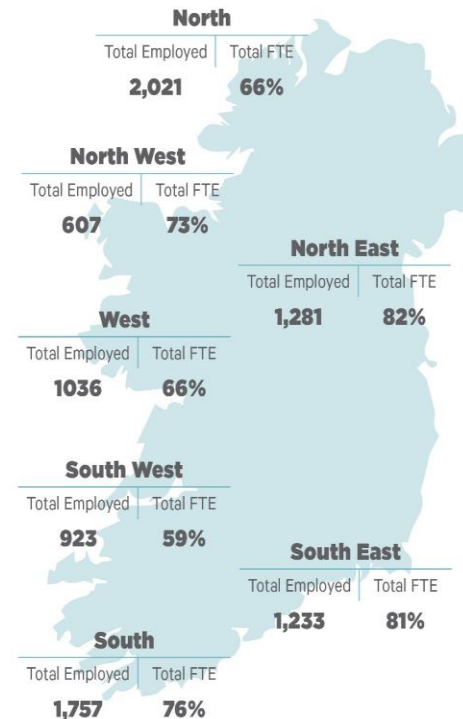
13 September 2017

# Fishing / processing sector employment

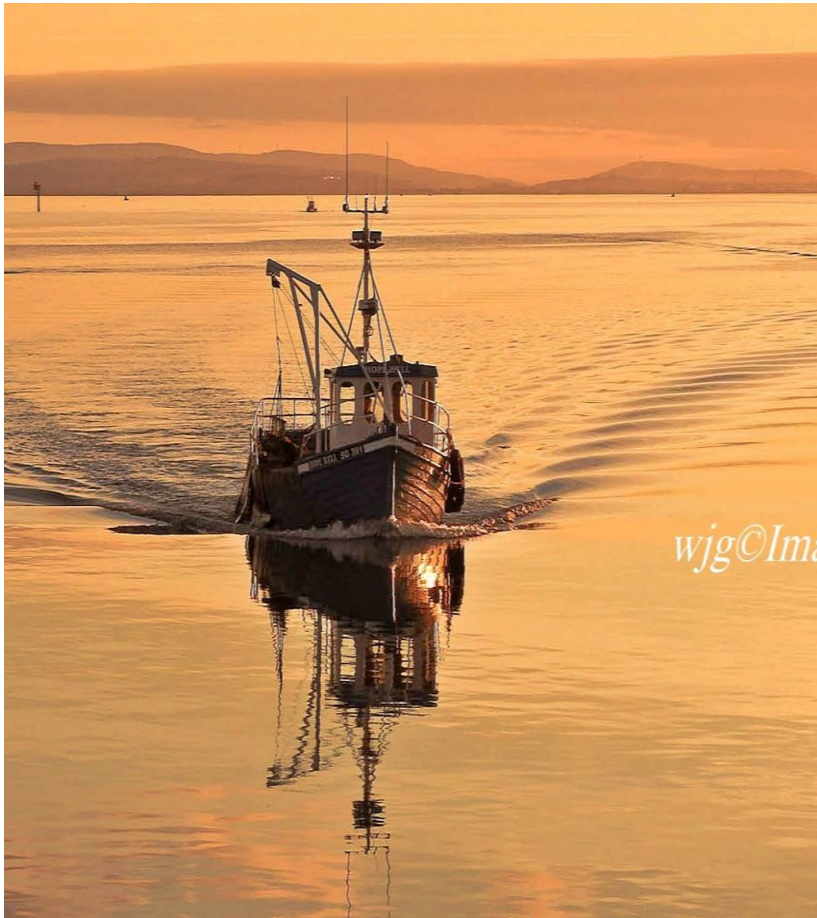
- 7,000 people employed in peripheral coastal areas
- €300 million worth sea fish caught by Irish vessels
- Prawns and Mackerel two most important

# 11,000

including ancillary  
employment



# Inshore





# Whitefish— Monk, Hake, Haddock, Cod, Whiting, and Nephrops



# Beam Trawling – Scallops, Flatfish, Monk



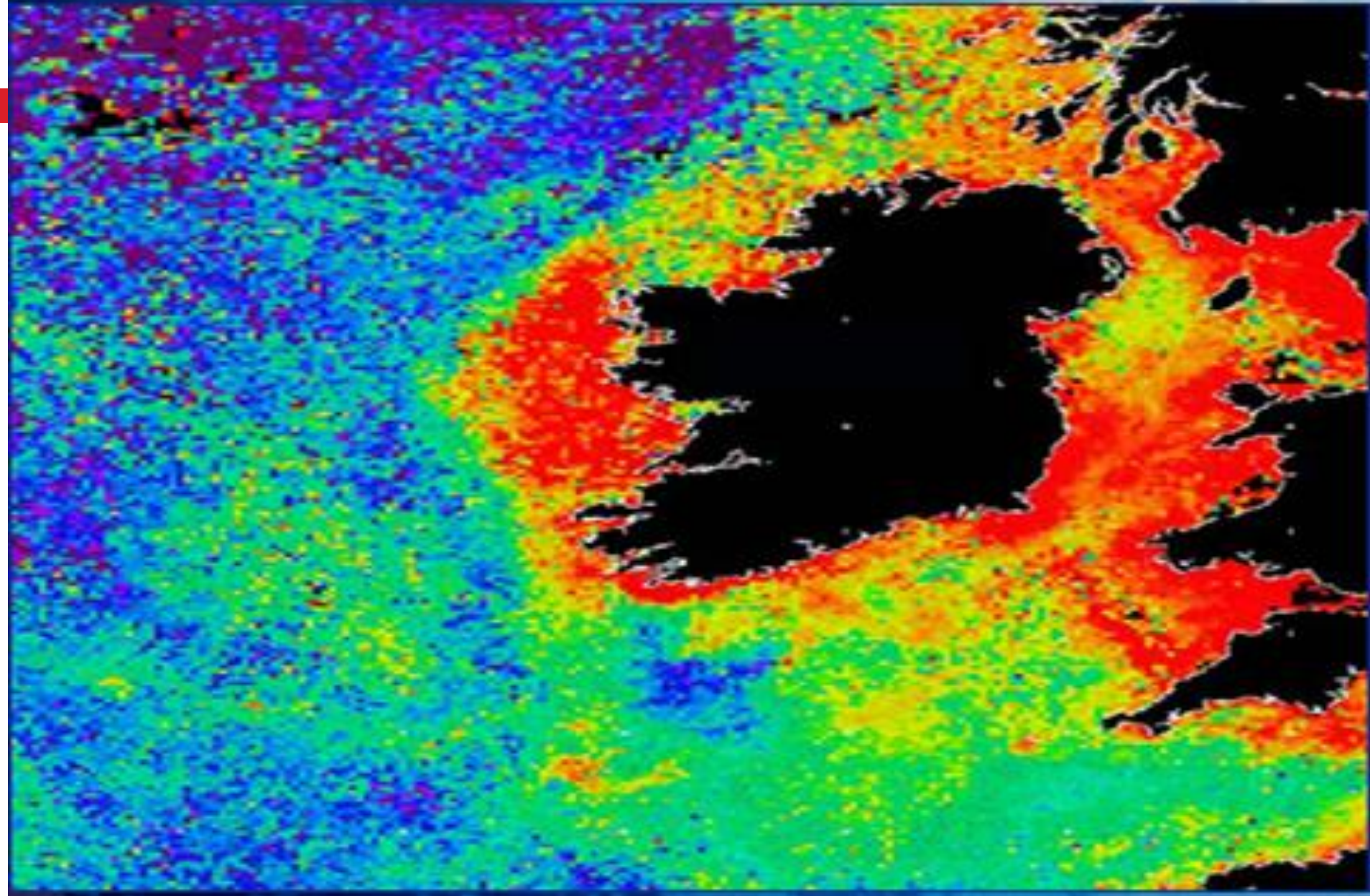


# Pelagic – Mackerel, Herring, Horse Mackerel, Blue Whiting

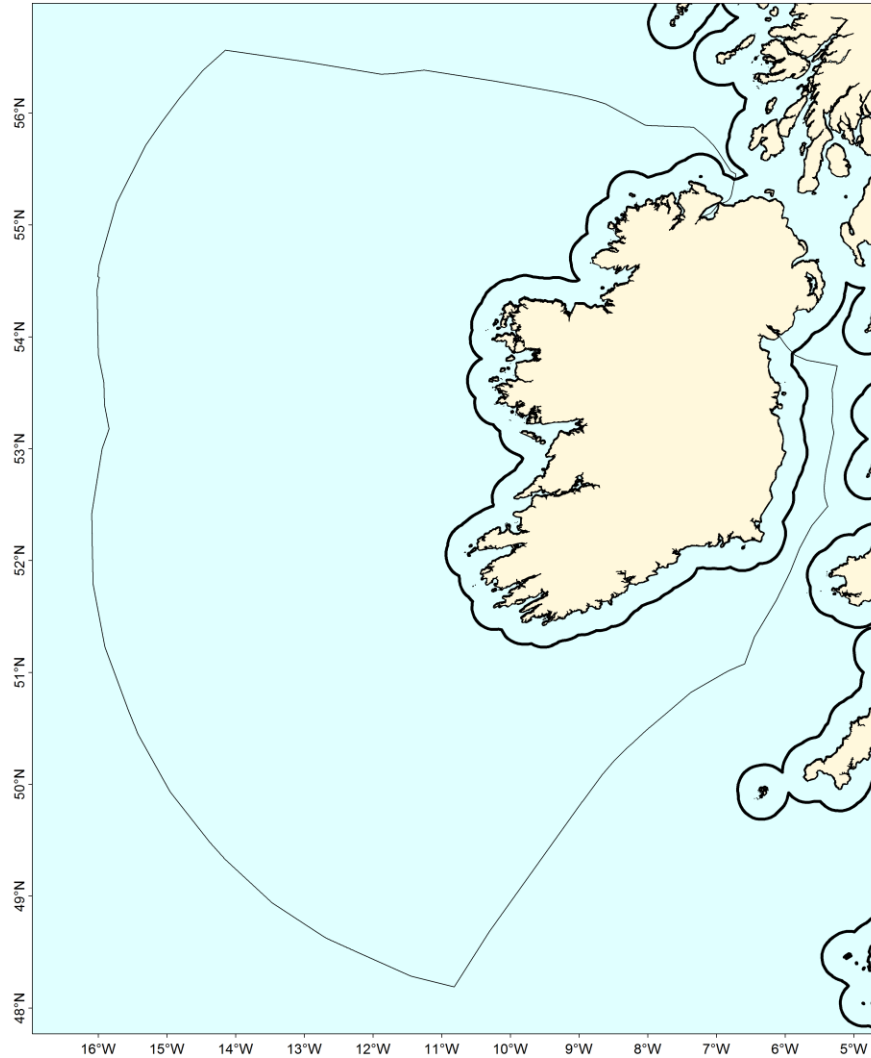




# Productivity in Irish Waters

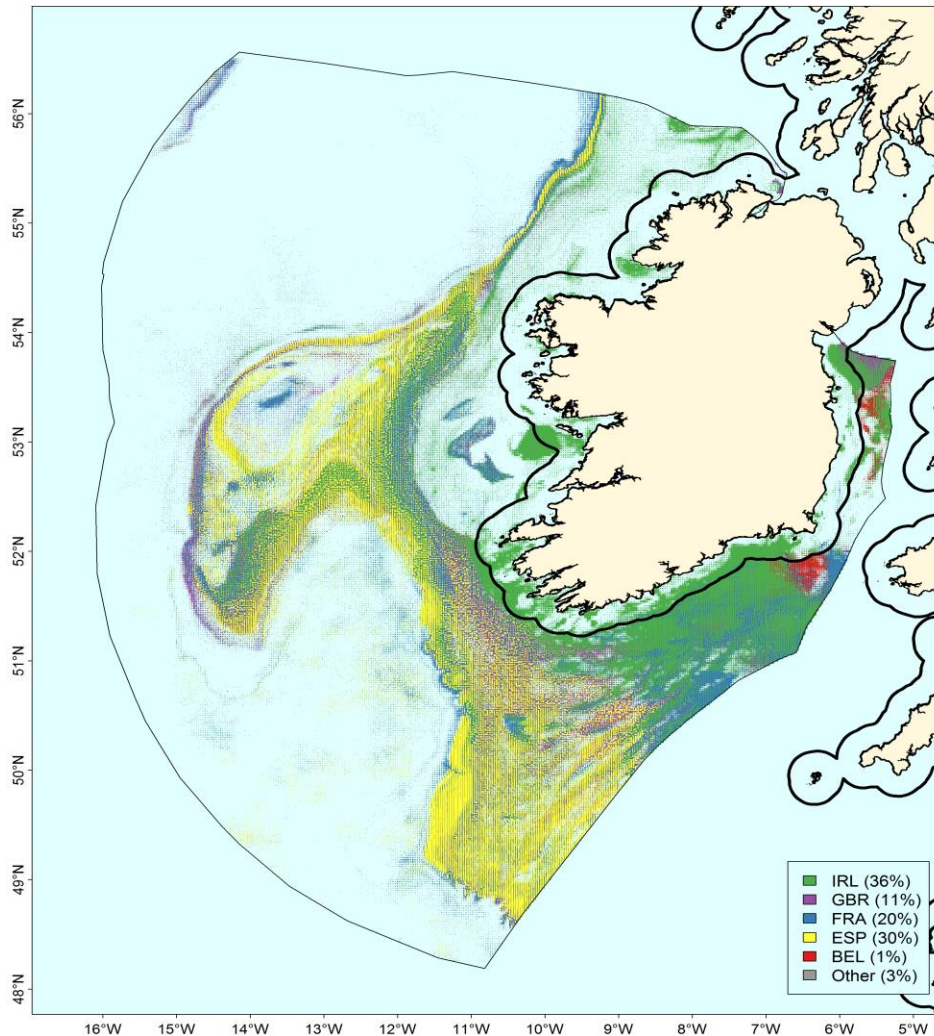


# Ireland's 12 mile limit and 200 mile EEZ



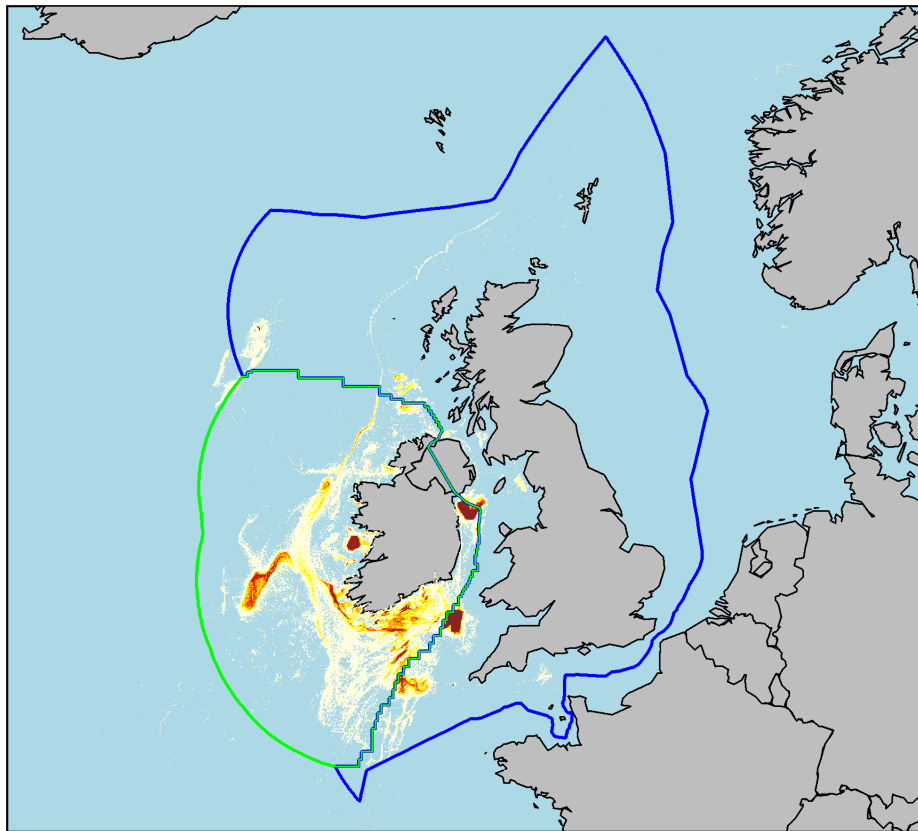


# Ireland's 12 mile limit and 200 mile EEZ – fishing activity



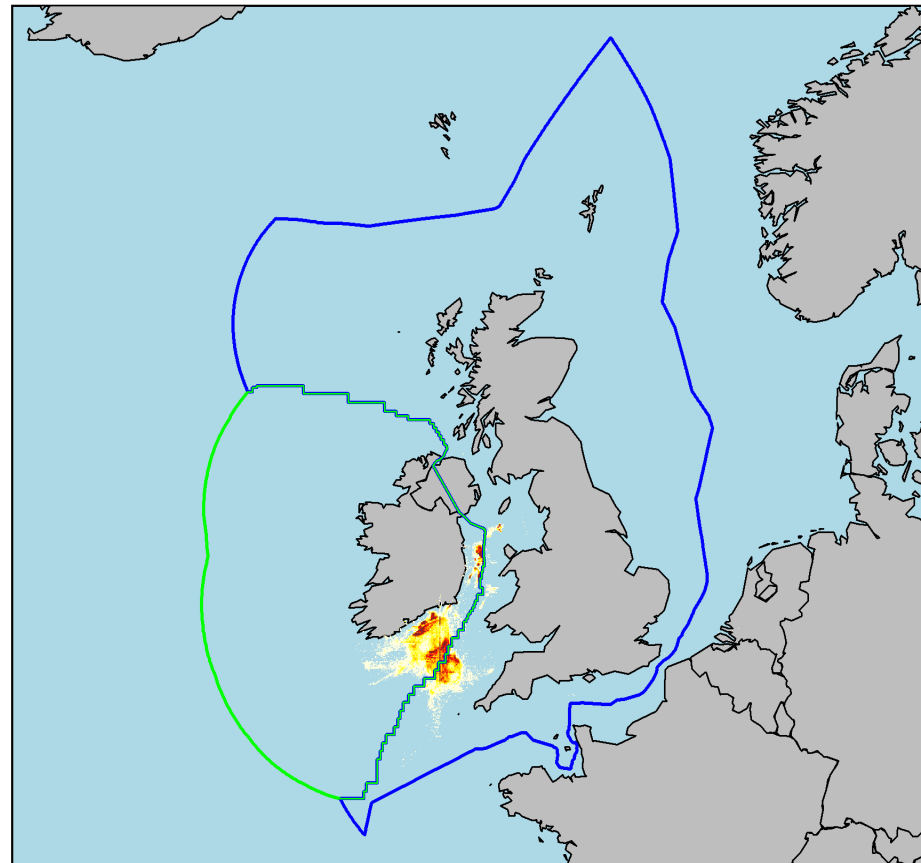
# WHITEFISH AND PRAWN TRAWLING – IRISH VESSELS

BottomOtterTrawls



# BEAM TRAWLING— IRISH VESSELS

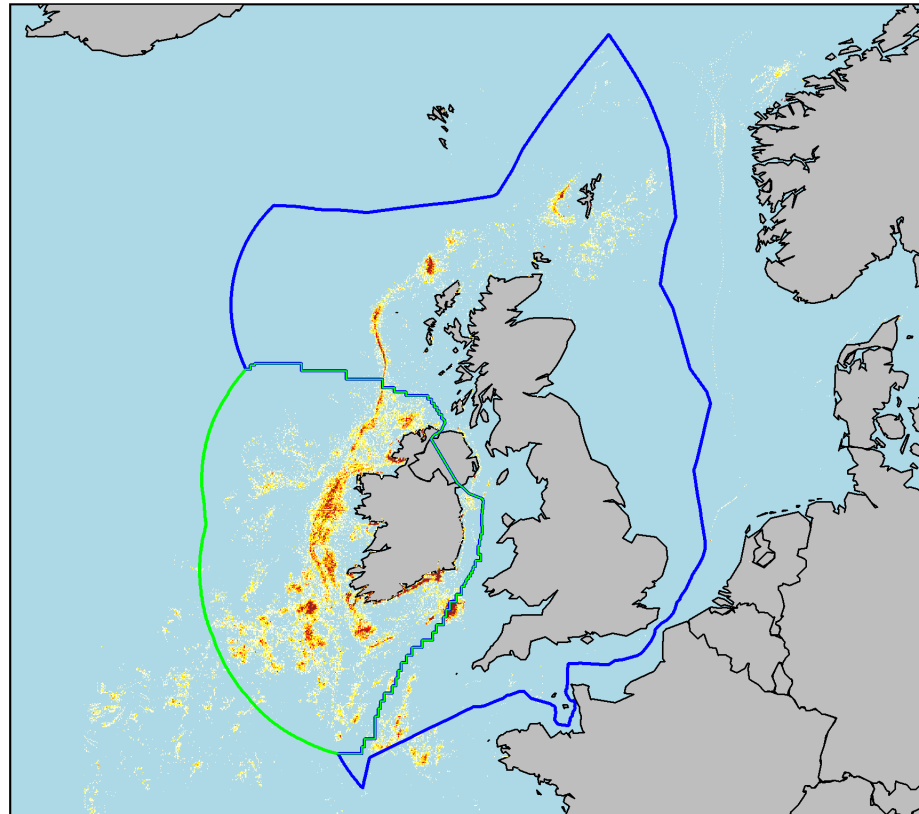
BeamTrawls





# PELAGIC FISHING – IRISH VESSELS

PelagicTrawls



# IRISH PELAGIC CATCHING SECTOR



23 PELAGIC RSW  
DEDICATED VESSELS

28 MIXED  
PELAGIC/DEMERSAL  
VESSELS WITH RSW  
SYSTEMS

# IRISH PELAGIC PROCESSING / EXPORTING SECTOR

KILLYBEGS – 6 plants

FISHMEAL

5 Plants outside  
Killybegs – Kincasslagh,  
Rossaveal, Dingle,  
Castletownbere,  
Baltimore

UFI/Pelagia Killybegs



# FINFISH AQUACULTURE IN IRELAND



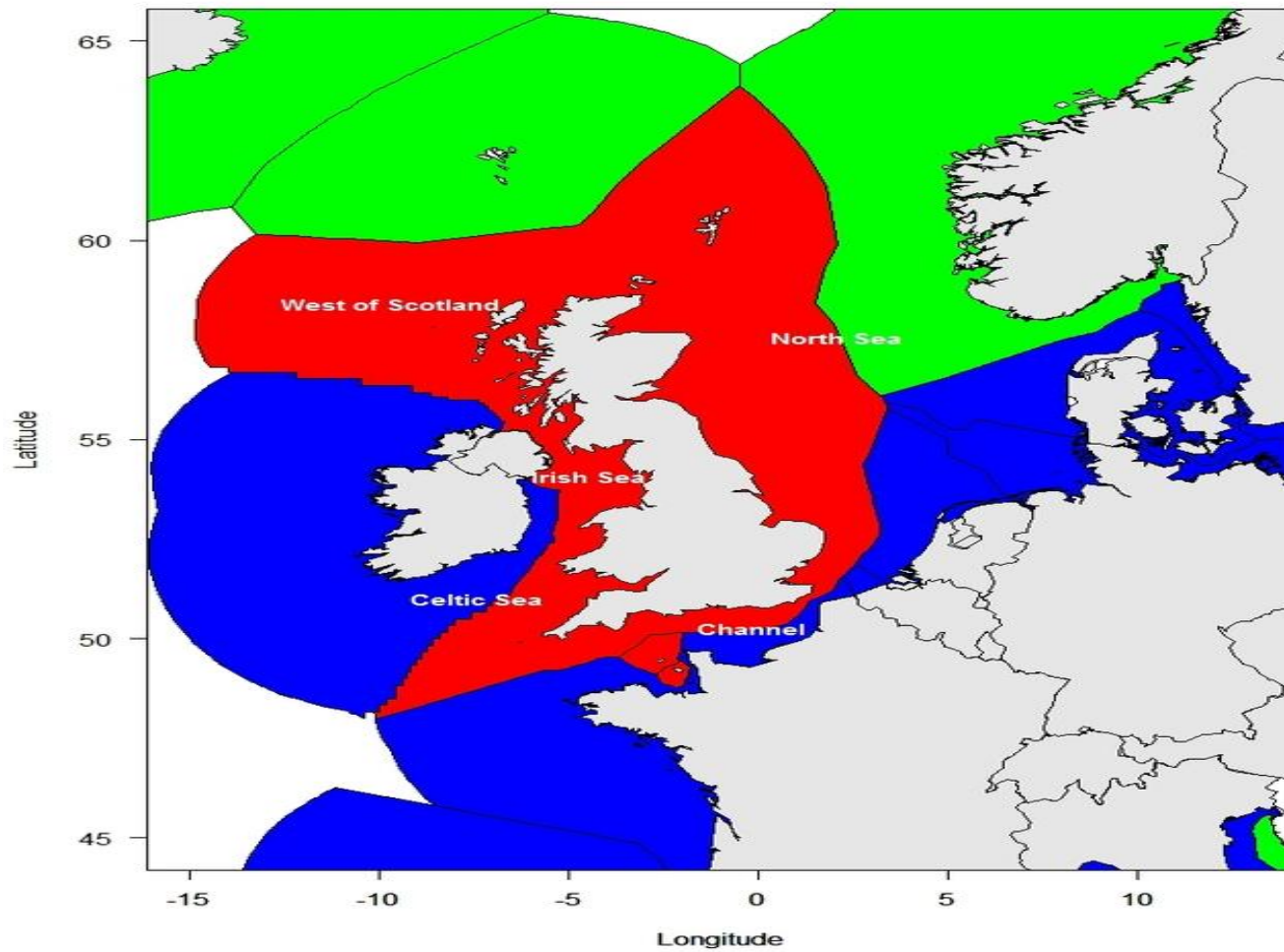
Salmon production  
16,300 tonnes (2016)

Limited domestic market  
for fishfeed

Continued  
underdevelopment  
compares with Scotland  
/ Norway / Chile

Limited supply of finfish  
production trimmings as  
raw material

# BREXIT!



# Go raibh maith agaibh!

