

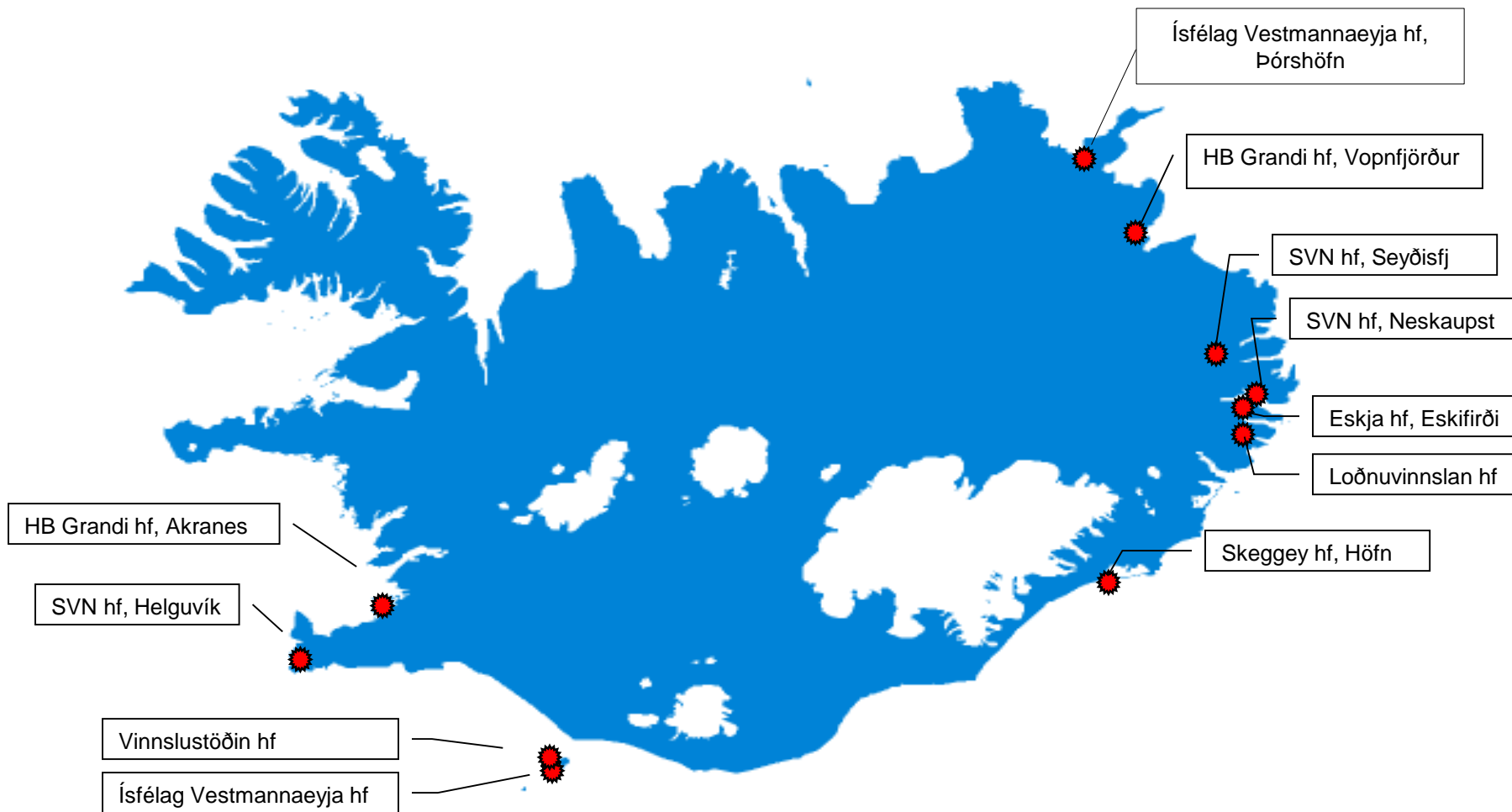


FÉLAG ÍSLENSKRA
FISKMJÖLSFRAMLEIÐENDA

EU Fishmeal conference in Westmannaeyjar
27 -28 august 2015

Electrification of the Icelandic Fishmeal industry

11 Fish Meal factories 2015 Total capacity 10.000 t/24h





**FÉLAG ÍSLENSKRA
FISKMJÖLSFRAMLÆIÐENDA**

- First electrode boiler for steam production was installed in Krossanes, Akureyri, in 1990
- Next Síldarvinnslan, Neskaupsstað, 1994



**FÉLAG ÍSLENSKRA
FISKMJÖLSFRAMLEIÐENDA**

- HB Grandi factory in Vopnafjörður began using electricity to heat air in order to dry meal in hot air dryers in 2012.
- The factory was, to our best knowledges, the first to be 100 % green.



FÉLAG ÍSLENSKRA
FISKMJÖLFRAMLEIÐENDA

Arguments in favor of electrification:

- Enables better use of energy produced in Iceland by water falls.
- Green renewable electricity replaces imported fuel oil.
- Emission of greenhouse gases (carbon dioxide) decreases a lot



FÉLAG ÍSLENSKRA
FISKMJÖLSFRAMLEIÐENDA

Arguments in favor of electrification:

- Electrification saves valuable foreign currency.
- Electrification has been more cost efficient.
- Working conditions in the factories have improved.



FÉLAG ÍSLENSKRA
FISKMJÖLFRAMLEIÐENDA

Arguments in favor of electrification:

- Operating the dryers is more easy with electricity than oil.
- Electrification with renewable electricity is very environmental friendly.

installed capacity - megawatts

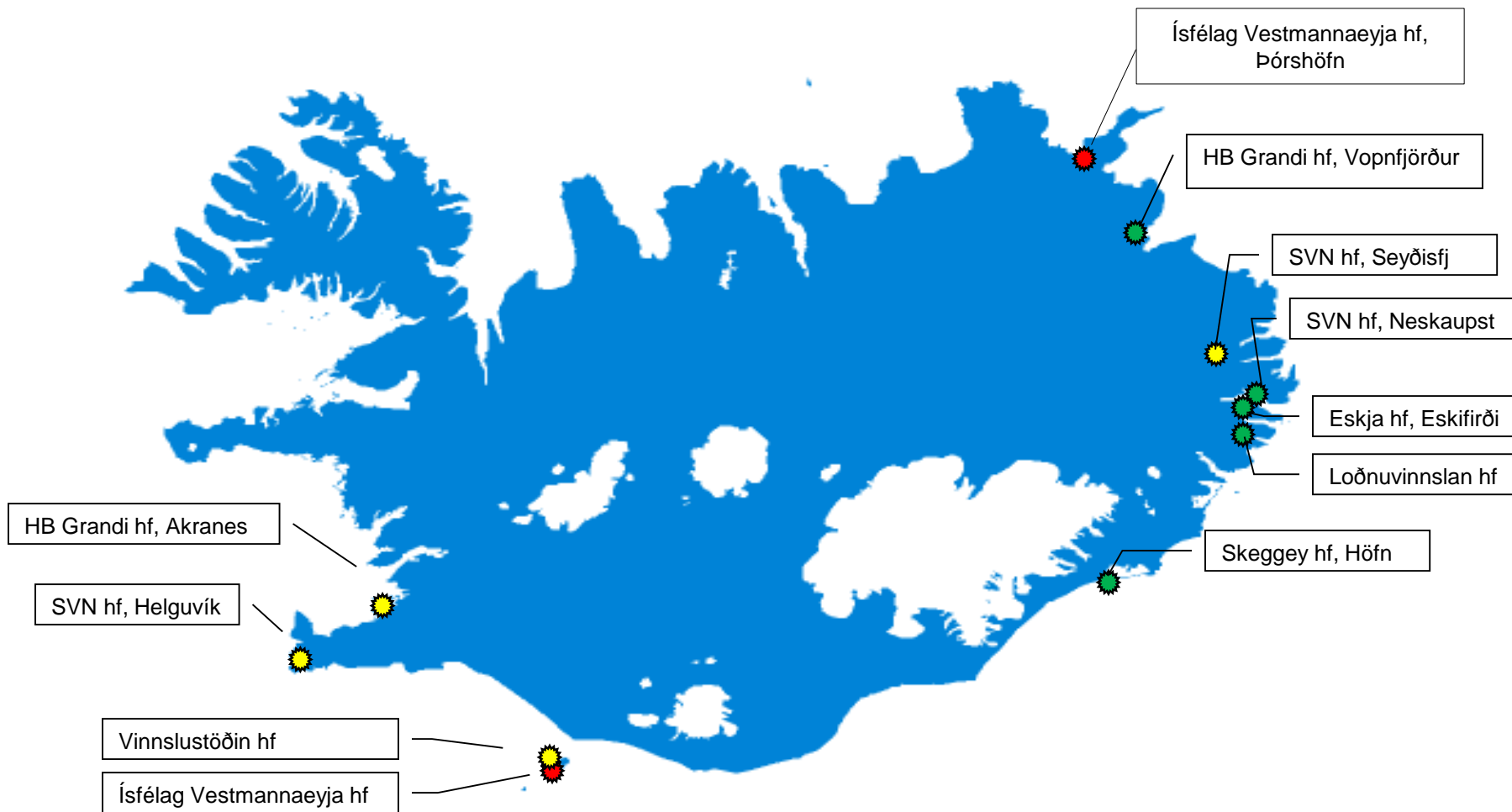
2011 – 79,7 megawatts

- Akranes 1,0
- Vopnafjörður 16,0
- Seyðisfjörður 15,0
- Helguvík 13,2
- Neskaupstaður 13,2
- Eskja 8,4
- Fáskrúðsfjörður 0,0
- Skinney Þinganes 0,0
- Ísfélag Vestm.eyja 0,9
- Vinnslustöðin 12,0
- Þórshöfn 0,0

2015 – 154,8 megawatts

- Akranes 13,0
- Vopnafjörður 20,0
- Seyðisfjörður 15,0
- Helguvík 13,2
- Neskaupstaður 29,2
- Eskja 21,0
- Fáskrúðsfjörður 14,5
- Skinney Þinganes 16,0
- Ísfélag Vestm.eyja 0,9
- Vinnslustöðin 12,0
- Þórshöfn 0,0

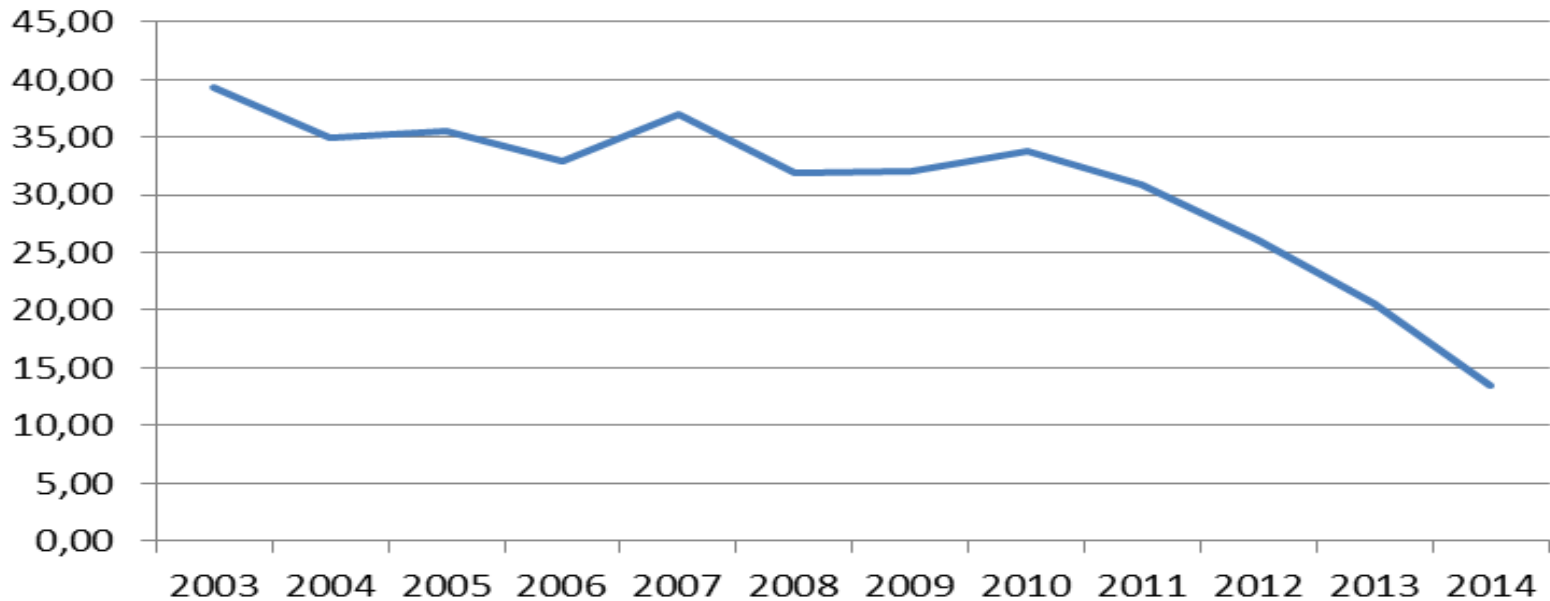
11 Fish Meal factories 2015 Total capacity 10.000 t/24h





FÉLAG ÍSLENSKRA FISKMJÖLSFRAMLEIÐENDA

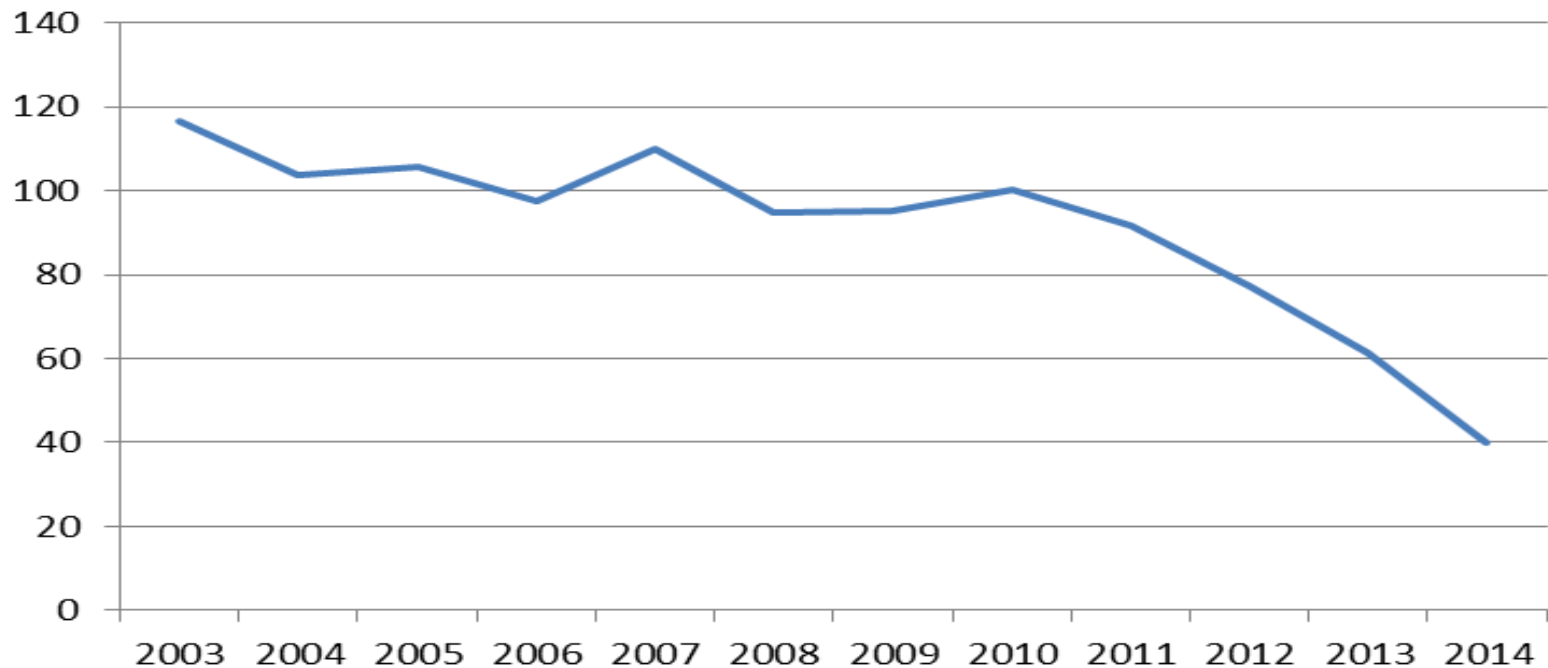
lítrar olía á hráefnistonn





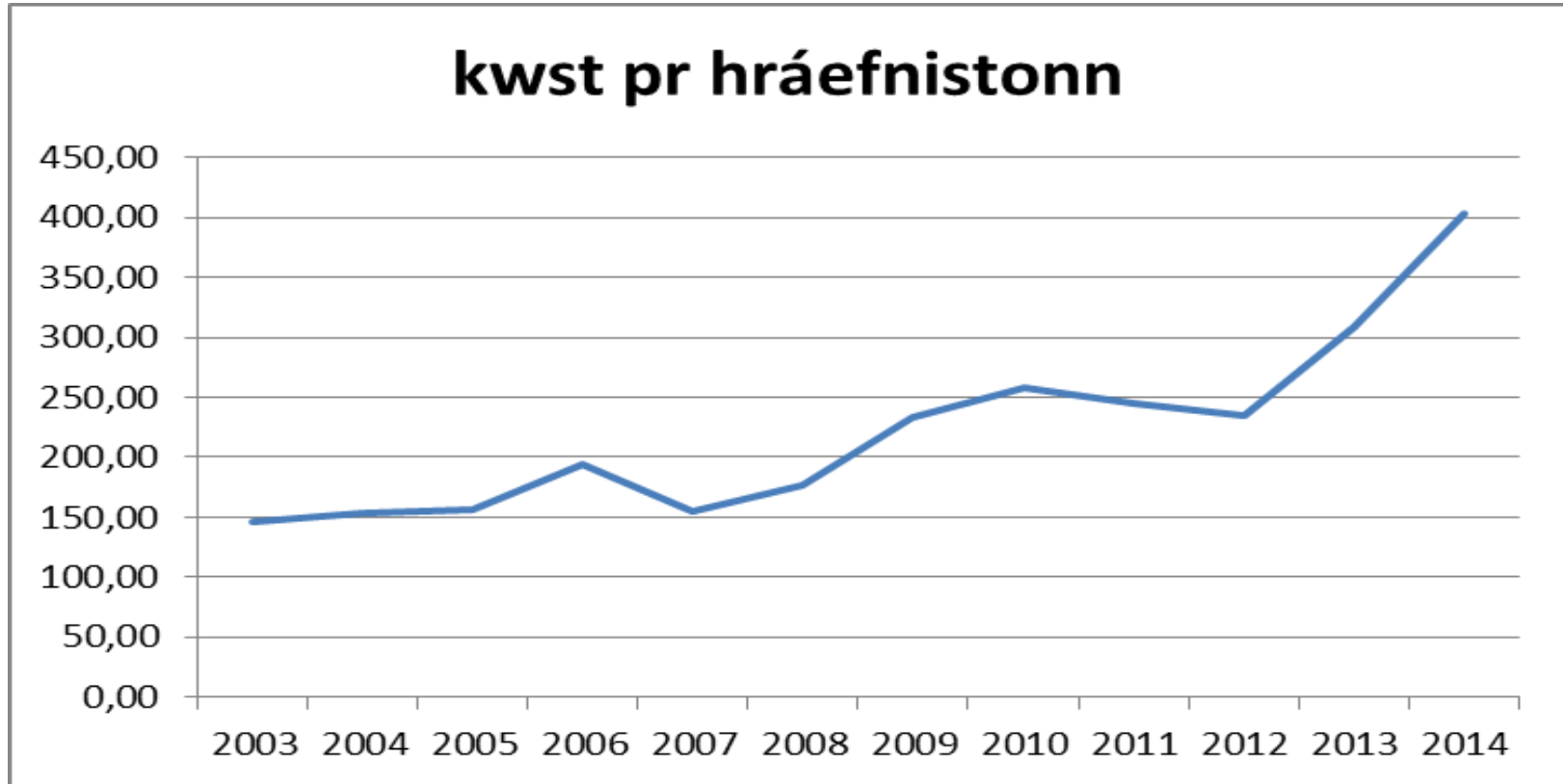
FÉLAG ÍSLENSKRA
FISKMJÖLSFRAMLEIÐENDA

CO2 útslepp á hráefnistonn





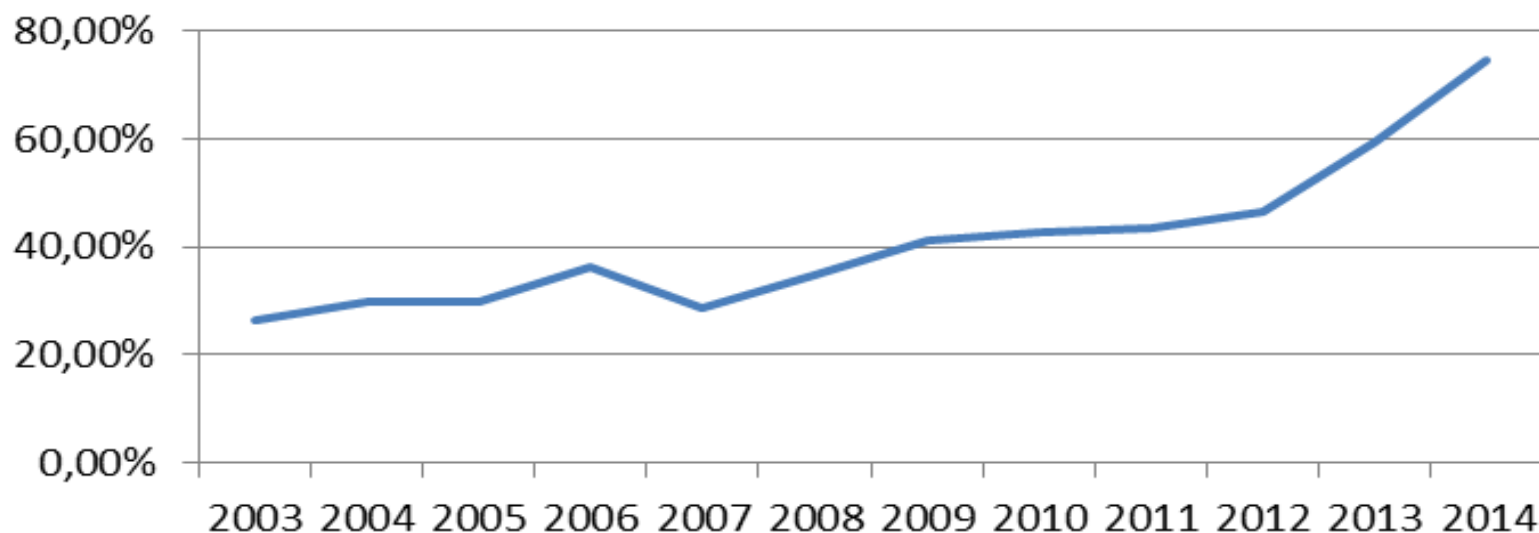
FÉLAG ÍSLENSKRA FISKMJÖLSFRAMLEIÐENDA





FÉLAG ÍSLENSKRA
FISKMJÖLSFRAMLEIÐENDA

hlutfall orku framleitt með rafmagni



Thank you

