

Introduction

Andrew Campbell



Presentation to the Eufishmeal Conference
September 13th 2017



Icon showing a fish, a bird, and a mountain range. <p>FISHERIES & ECOSYSTEMS</p>	Icon showing two dolphins. <p>MARINE ENVIRONMENT</p>	Icon showing three fish. <p>FISH HEALTH</p>	Icon showing a fork, a fish, and a knife. <p>SEAFOOD SAFETY</p>	Icon showing a fish in a circular frame with other fish icons. <p>AQUACULTURE</p>
Icon showing a map with a location pin. <p>SEABED MAPPING</p>	Icon showing a map of Ireland with arrows indicating ocean currents. <p>OCEANOGRAPHY</p>	Icon showing a cargo ship. <p>SHIPPING, MARITIME & PORTS</p>	Icon showing a group of people surrounded by stars. <p>STRATEGY & DIRECTIVES</p>	Icon showing a group of people sitting around a table. <p>EDUCATION & OUTREACH</p>

Facilities

Offices and Laboratories



Newport, Dublin,
Killybegs, Greencastle
Dunmore East,
Castletownbere,
Ros an Mhil

Research Vessels



Celtic Explorer (65m)



Celtic Voyager (31m)



Holland I
Deepwater ROV

Co-operative Working



Productivity & Value

- Species

- NEPHROPS

- MACKEREL

- HORSE MAC

- BLUE WHITI

- MEGRIM

- ANGLERFISH

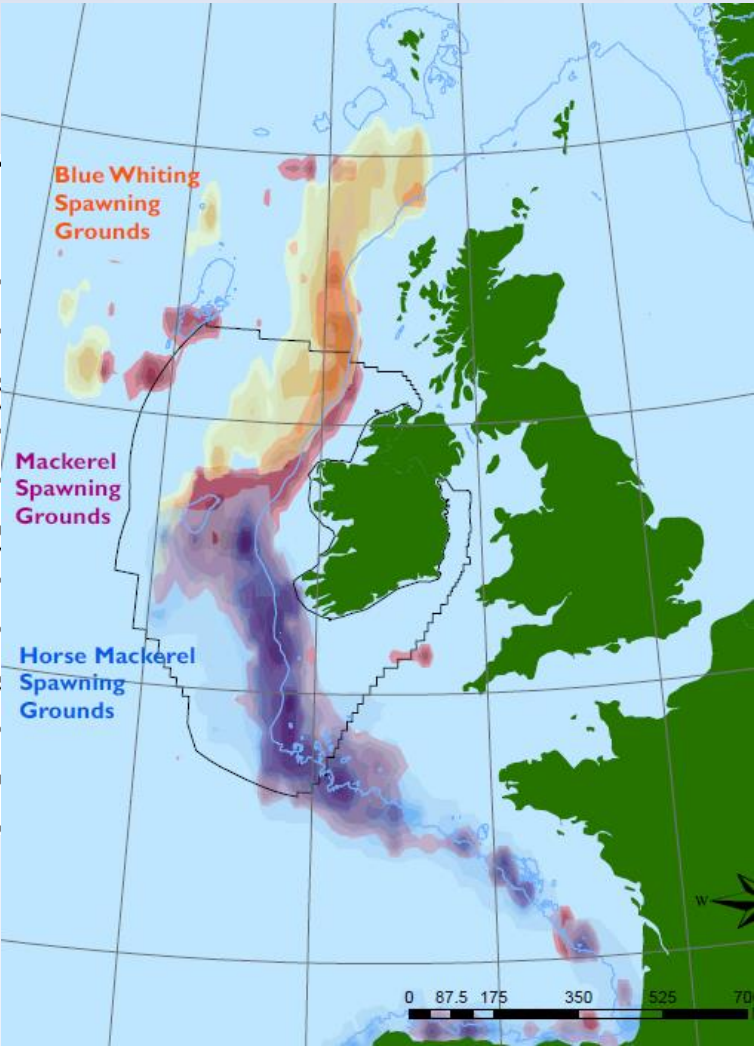
- HAKE

- WHITING

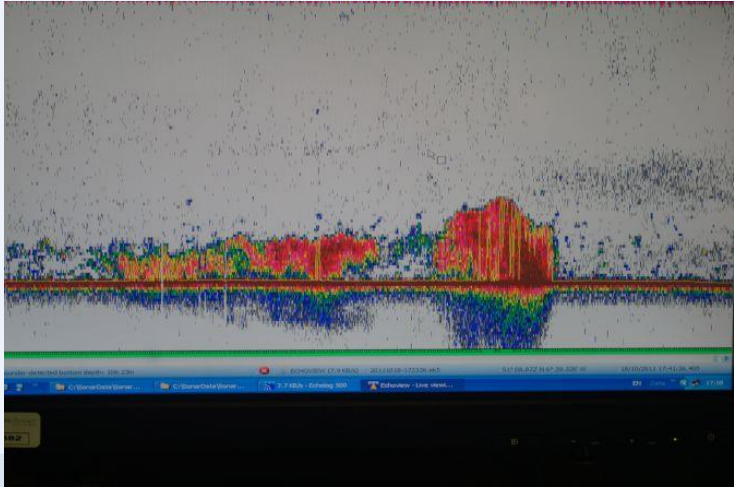
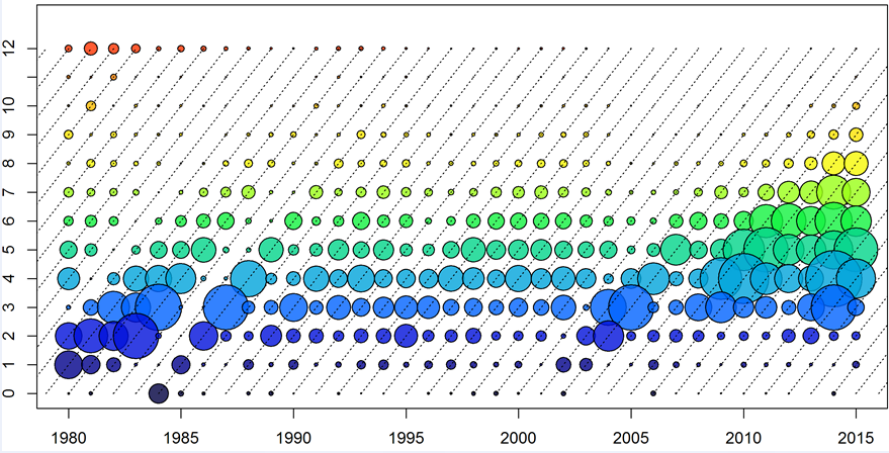
- ALBACORE

- HERRING

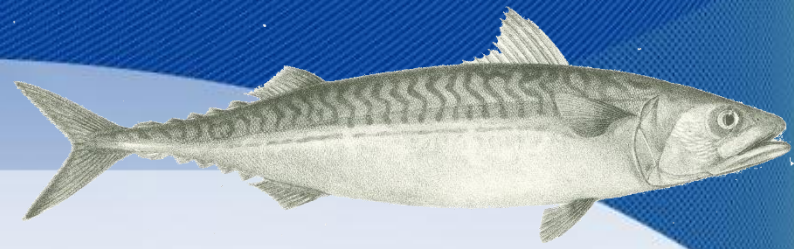
- BOARFISH



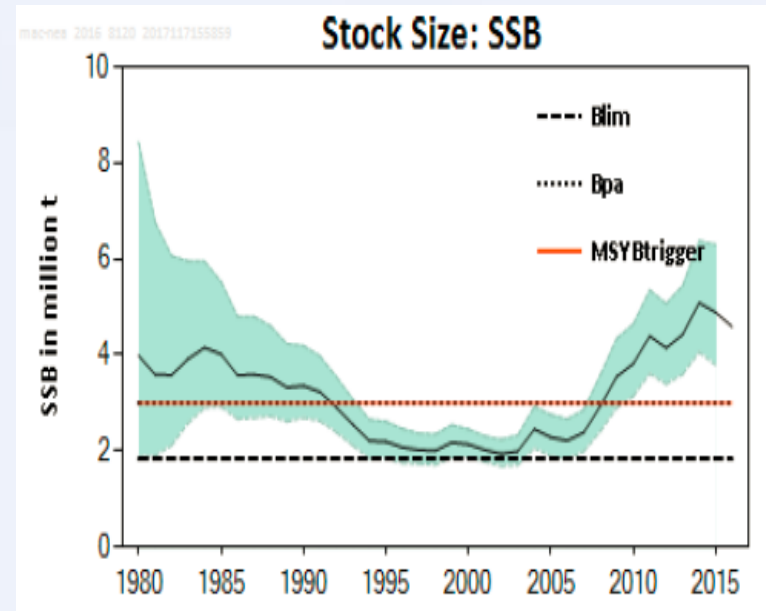
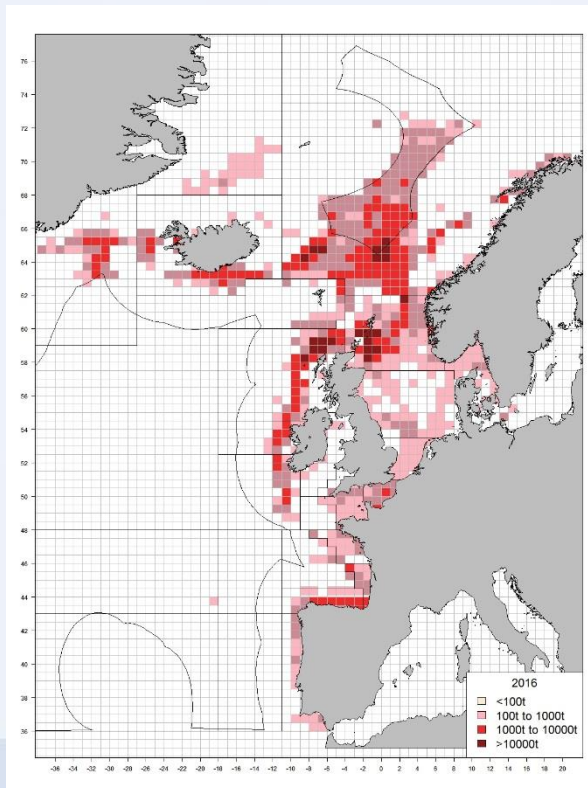
Stock Assessment and Advice



Mackerel



- Ireland's most valuable pelagic fishery
- International catches >1Mt annually since 2014 (above advice!)
- Recent northward expansion of summer distribution
- Ireland – stock coordinator, chair of recent benchmark assessment
- Challenging to survey with acoustics (no swim bladder)



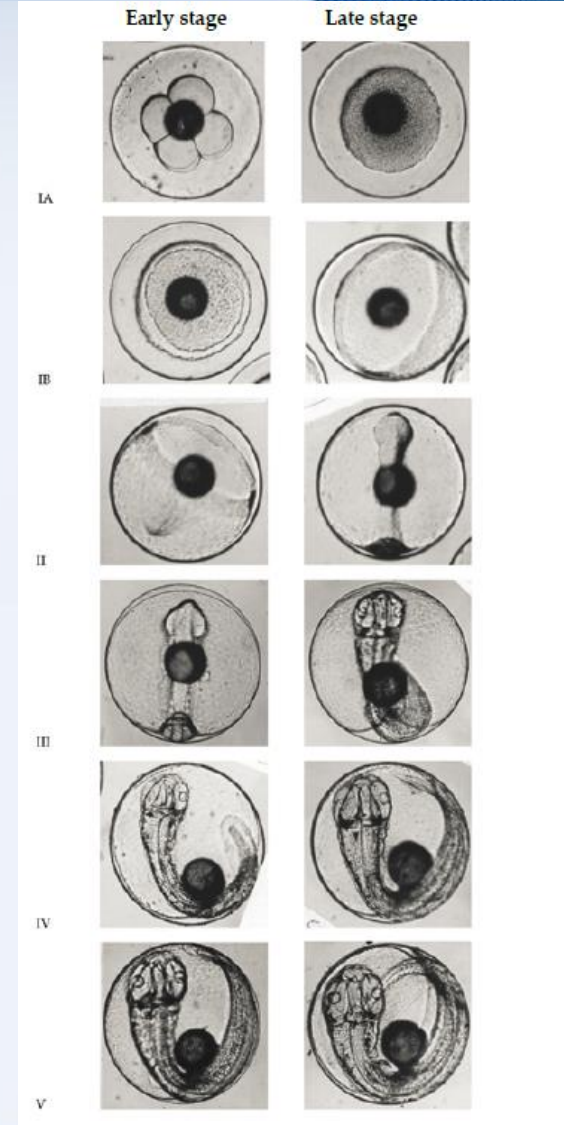
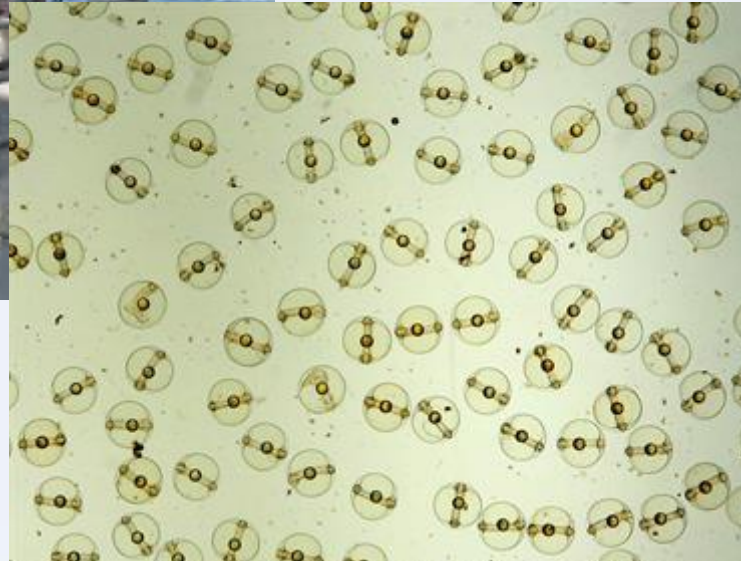
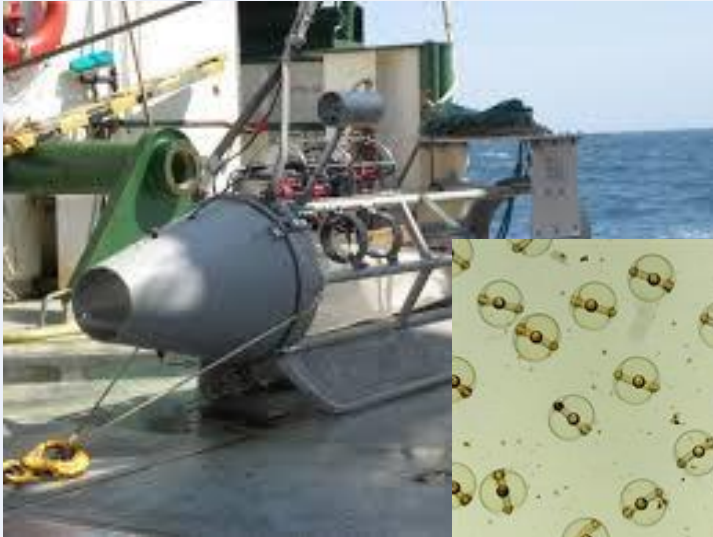
Mackerel & Horse Mackerel Egg Surveys

2016 International Egg Survey

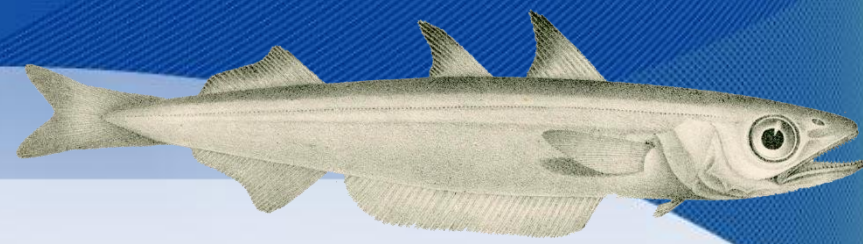
19 individual cruises by 8 nations (367 days) – Ireland 55 days

Feb-Aug

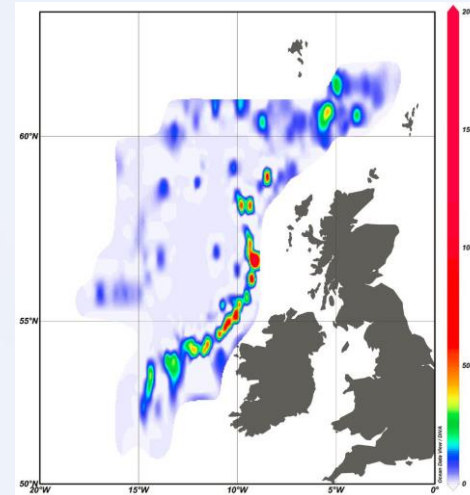
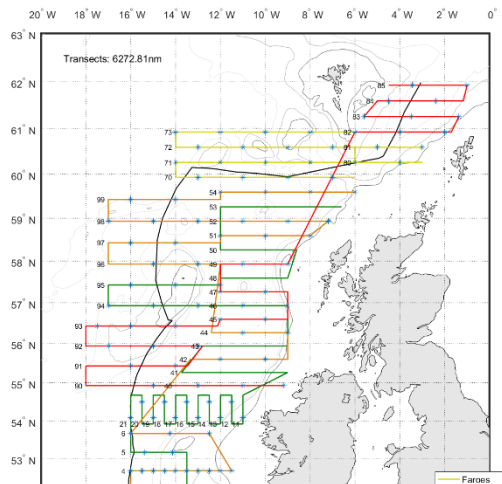
Cadiz-Iceland



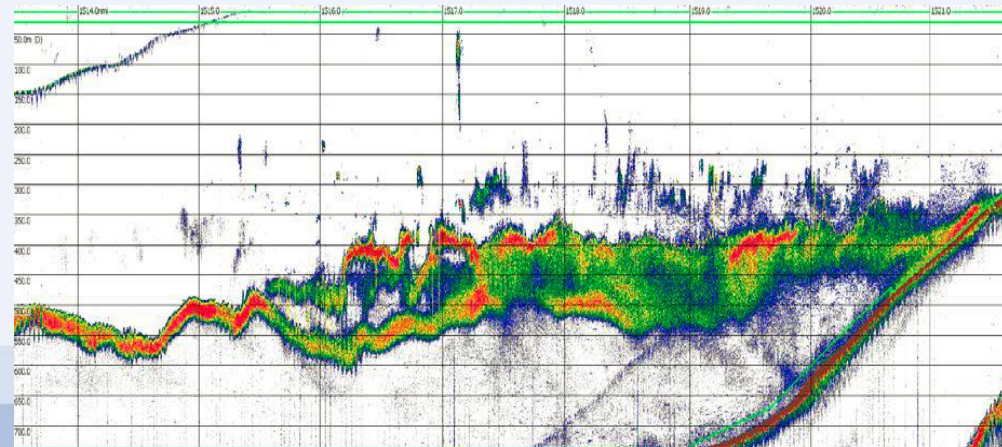
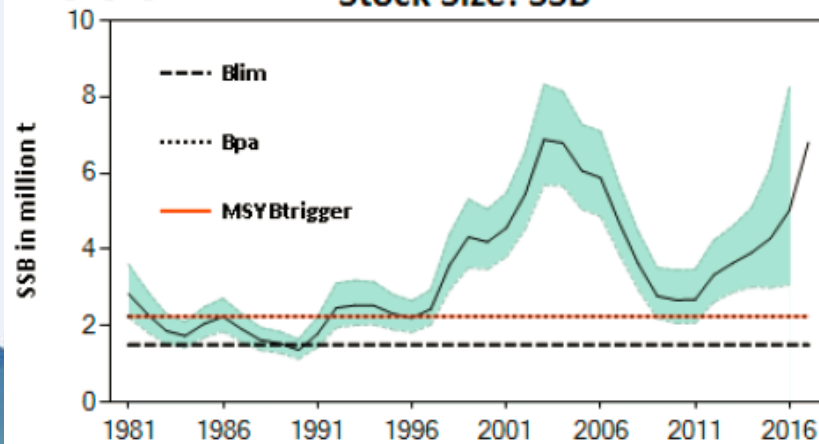
Blue Whiting



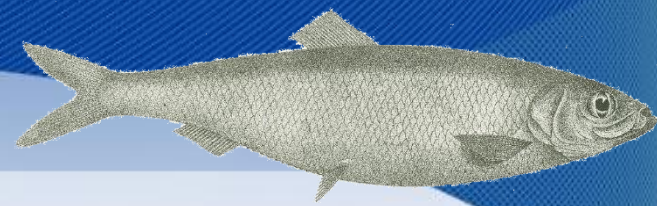
International Blue Whiting Spawning Stock Survey
3 week acoustic survey in Mar-Apr in collaboration with FO, NL & NO



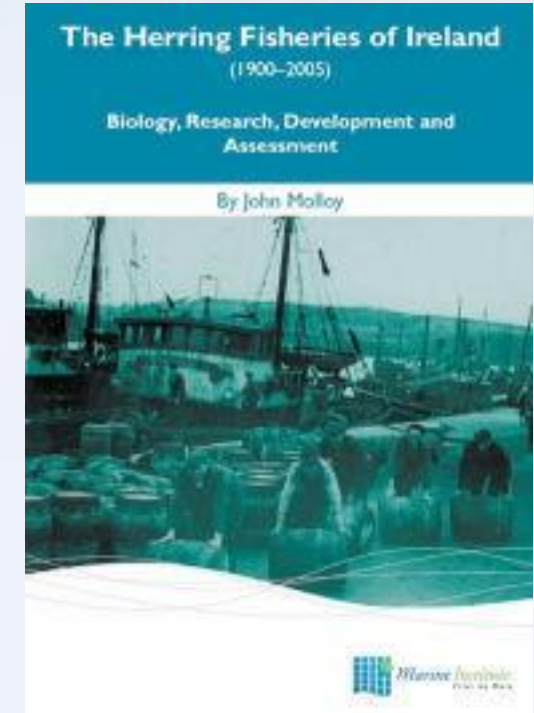
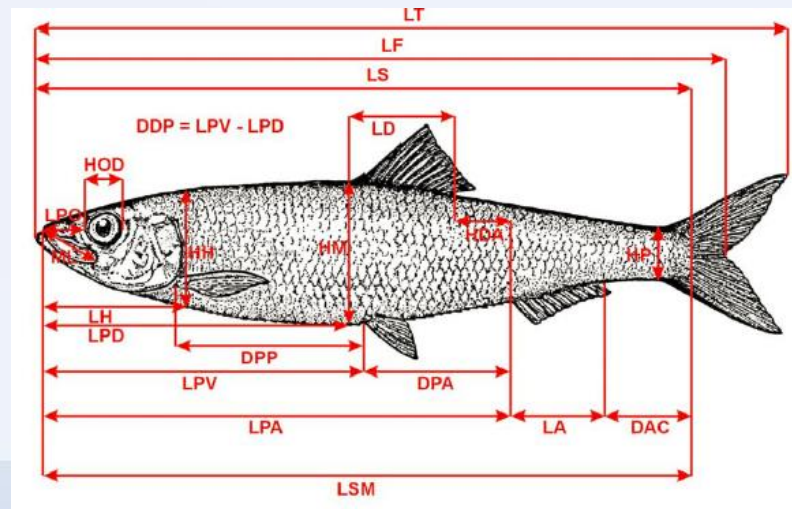
Stock Size: SSB



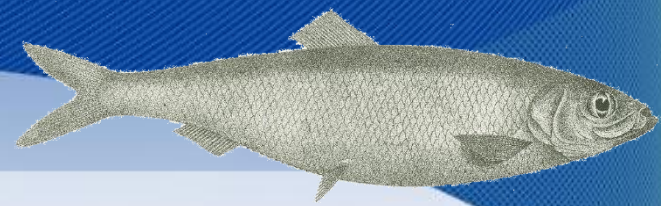
Herring



- Long history of fisheries and research in Ireland
- Discrete spawning locations
- Mixing between stocks complicates stock identification and the assessment process
 - tagging studies
 - larval drift modelling
 - morphometrics
- Recent (environmentally driven?) changes affecting the timing of spawning migration



Herring Surveys



CSHAS

Celtic Sea Herring Acoustic Survey

3 weeks Oct-Nov

Adaptive survey to track distribution changes

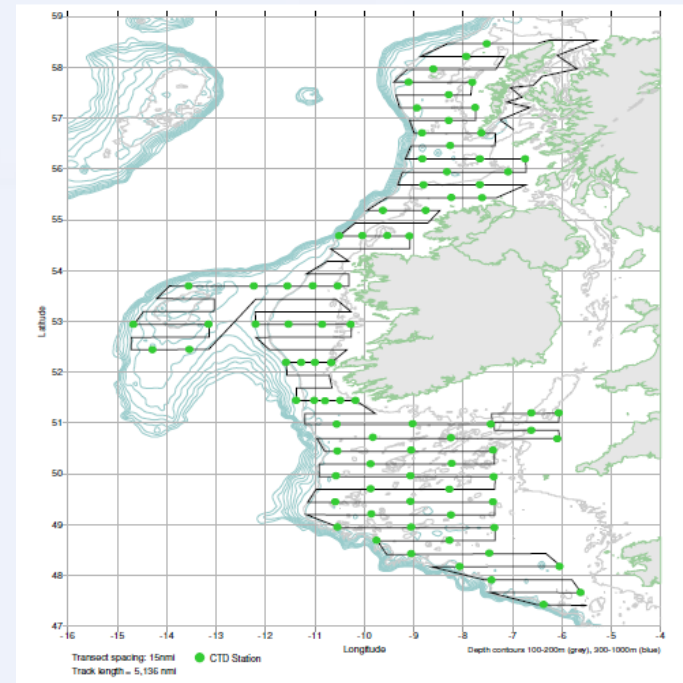
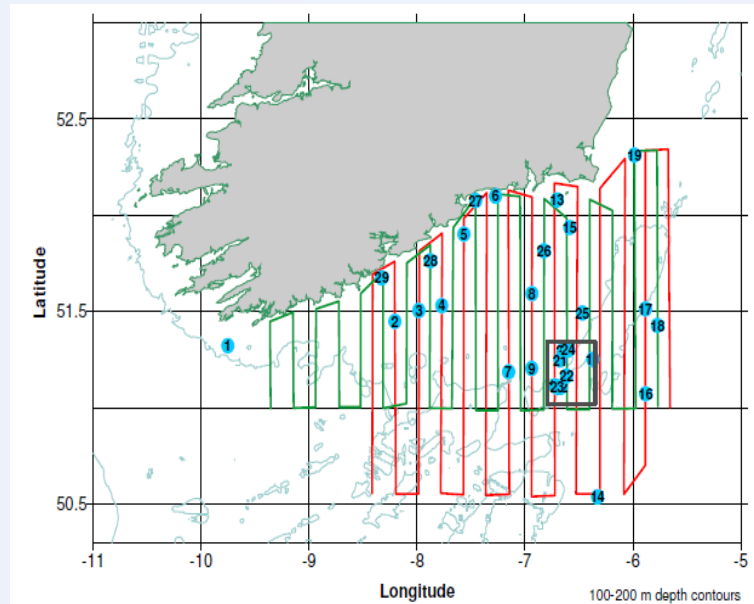
WESPAS

Western European Shelf Pelagic

Acoustic Survey

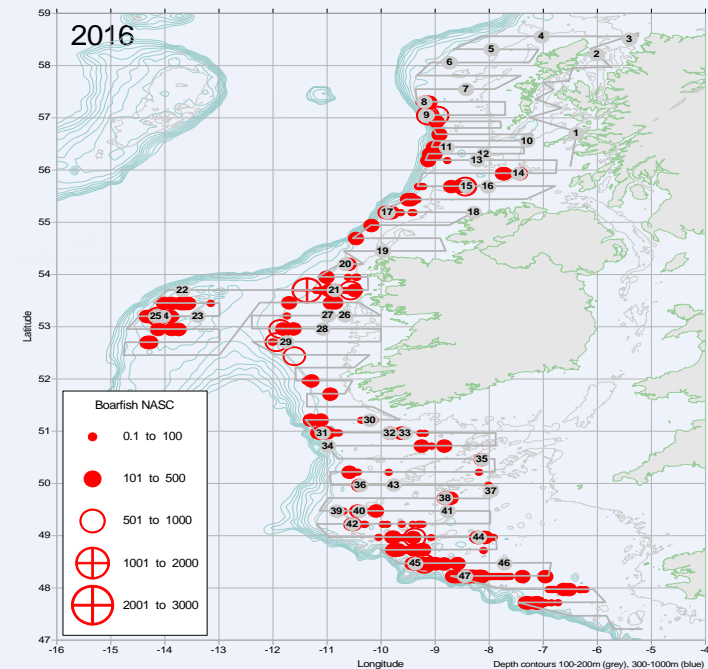
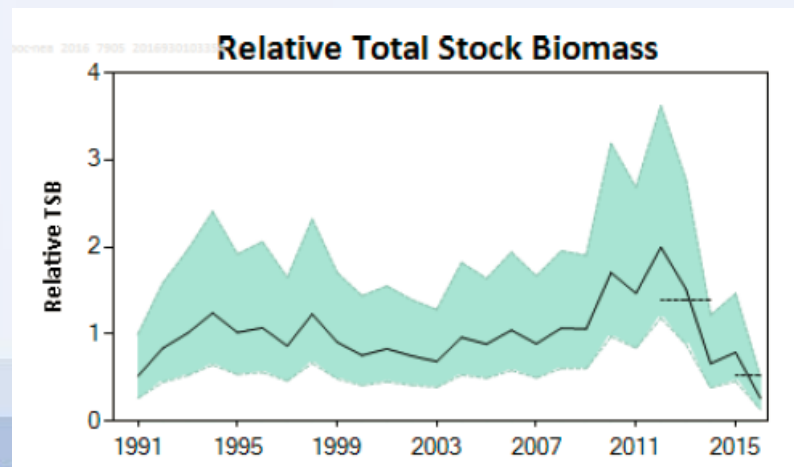
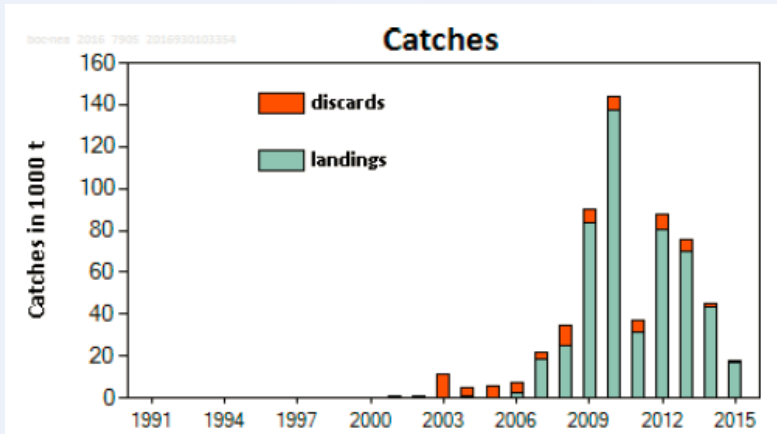
6 weeks Jun-Jul

Multidisciplinary survey covering
boarfish & Malin shelf herring



Boarfish

- Developing targeted fishery, previously discarded
- Knowledge gaps – long lived, slow growth, easy to catch
- Assessment methods under development
- Collaboration with Irish industry, survey now conducted as part of WESPAS



Thank you